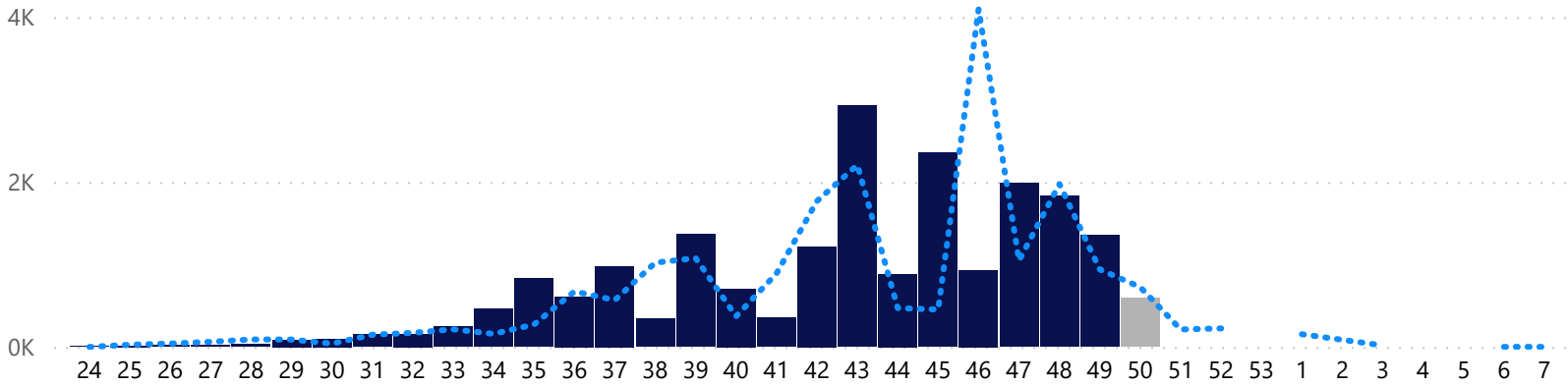


## 21/22 vs 22/23 per Week

● Confirmed ● Unconfirmed ● 21/22



## Comparison Report Week (21/22 vs 22/23)

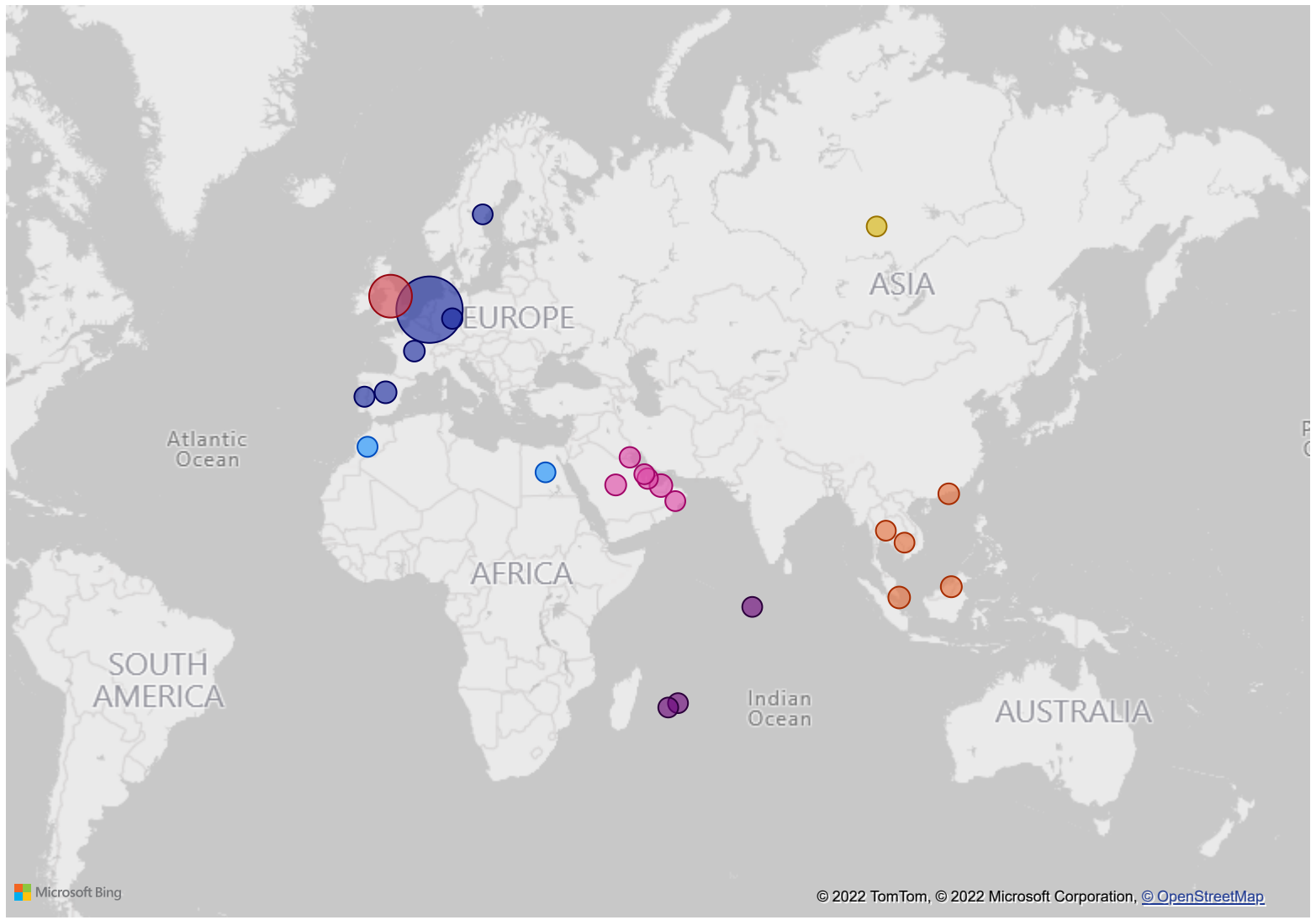
Region	22/23 Air	22/23 Sea	22/23 Total	21/22 Air	21/22 Sea	21/22 Total	Diff%
Africa							
Europe	12.24	981.19	993.43	74.30	660.60	734.90	35.2%
Far East & Asia	17.89	23.93	41.82	50.81	15.59	66.40	-37.0%
Indian Ocean Islands	0.68	0.00	0.68	0.00	0.49	0.49	38.8%
Middle East	9.64	0.00	9.64	23.95	18.91	42.86	-77.5%
Other	2.20	0.00	2.20	1.14	0.00	1.14	93.0%
Russian Federation							
United Kingdom	0.00	308.86	308.86	19.98	73.69	93.67	229.7%
USA & Canada							
<b>Total</b>	<b>42.65</b>	<b>1 313.98</b>	<b>1 356.63</b>	<b>170.18</b>	<b>769.28</b>	<b>939.46</b>	<b>44.4%</b>

## Comparison Year To Date (21/22 vs 22/23)

Region	22/23 Air	22/23 Sea	22/23 Total	21/22 Air	21/22 Sea	21/22 Total	Diff%
Africa	0.27	43.53	43.80	0.00	0.00	0.00	100.0%
Europe	469.60	11 722.94	12 192.54	1 053.18	10 797.39	11 850.57	2.9%
Far East & Asia	670.42	247.42	917.84	576.76	350.79	927.55	-1.0%
Indian Ocean Islands	8.65	3.73	12.38	1.02	0.49	1.51	719.9%
Middle East	800.18	476.07	1 276.25	414.62	440.67	855.29	49.2%
Other	4.03	0.00	4.03	4.44	0.00	4.44	-9.2%
Russian Federation	0.97	0.00	0.97	0.00	0.00	0.00	100.0%
United Kingdom	930.93	4 615.28	5 546.21	1 285.06	3 954.81	5 239.87	5.8%
USA & Canada							
<b>Total</b>	<b>2 885.05</b>	<b>17 108.97</b>	<b>19 994.02</b>	<b>3 335.08</b>	<b>15 544.15</b>	<b>18 879.23</b>	<b>5.9%</b>

## Exports per Country

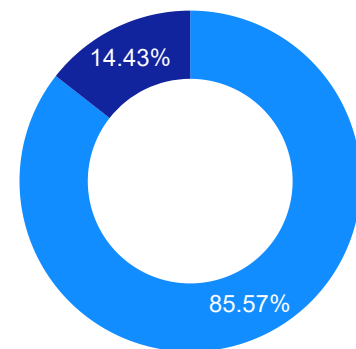
Region ● Africa ● Europe ● Far East & Asia ● Indian Ocean Isla... ● Middle East ● Other ● Russian Federation ● United Kingd...



### YTD Export Growth % (21/22 vs 22/23)

Region	22/23	21/22	Diff%
⊕ Africa	43.80	0.00	100.0%
⊕ Europe	12 192.54	11 850.57	2.9%
⊕ Far East & Asia	917.84	927.55	-1.0%
⊕ Indian Ocean Islands	12.38	1.51	719.9%
⊕ Middle East	1 276.25	855.29	49.2%
⊕ Other	4.03	4.44	-9.2%
⊕ Russian Federation	0.97	0.00	100.0%
⊕ United Kingdom	5 546.21	5 239.87	5.8%
⊕ USA & Canada			
<b>Total</b>	<b>19 994.02</b>	<b>18 879.23</b>	<b>5.9%</b>

### Transport Type



Transport ● Sea ● Air

## Exports per Region and Country

Region	Country	22/23	21/22	Diff	Diff%
Africa	<b>Egypt</b>	0.27	0.00	0.27	100.0%
	<b>Morocco</b>	43.53	0.00	43.53	100.0%
	<b>Total</b>	<b>43.80</b>	<b>0.00</b>	<b>43.80</b>	<b>100.0%</b>
Europe	<b>Denmark</b>	0.00	1.68	-1.68	-100.0%
	<b>France</b>	220.70	273.82	-53.12	-19.4%
	<b>Germany</b>	141.42	161.39	-19.97	-12.4%
	<b>Netherlands</b>	11 297.79	10 758.02	539.77	5.0%
	<b>Portugal</b>	65.29	0.00	65.29	100.0%
	<b>Spain</b>	462.09	655.66	-193.57	-29.5%
	<b>Sweden</b>	5.25	0.00	5.25	100.0%
	<b>Total</b>	<b>12 192.54</b>	<b>11 850.57</b>	<b>341.97</b>	<b>2.9%</b>
Far East & Asia	<b>Cambodia</b>	0.68	1.44	-0.76	-52.8%
	<b>Hong Kong</b>	204.05	199.60	4.45	2.2%
	<b>Malaysia</b>	266.46	270.22	-3.76	-1.4%
	<b>Singapore</b>	438.03	423.86	14.17	3.3%
	<b>Thailand</b>	8.62	32.43	-23.81	-73.4%
	<b>Total</b>	<b>917.84</b>	<b>927.55</b>	<b>-9.71</b>	<b>-1.0%</b>
Indian Ocean Islands	<b>Maldives</b>	0.67	0.00	0.67	100.0%
	<b>Mauritius</b>	8.97	1.02	7.95	779.4%
	<b>Reunion</b>	2.74	0.49	2.25	459.2%
	<b>Total</b>	<b>12.38</b>	<b>1.51</b>	<b>10.87</b>	<b>719.9%</b>
Middle East	<b>Bahrain</b>	28.65	14.35	14.30	99.7%
	<b>Kuwait</b>	141.26	54.02	87.24	161.5%
	<b>Oman</b>	13.20	20.47	-7.27	-35.5%
	<b>Qatar</b>	145.82	26.91	118.91	441.9%
	<b>Saudi Arabia</b>	263.73	136.22	127.51	93.6%
	<b>United Arab Emirates</b>	683.59	603.32	80.27	13.3%
	<b>Total</b>	<b>1 276.25</b>	<b>855.29</b>	<b>420.96</b>	<b>49.2%</b>
Other	<b>Unknown</b>	4.03	4.44	-0.41	-9.2%
	<b>Total</b>	<b>4.03</b>	<b>4.44</b>	<b>-0.41</b>	<b>-9.2%</b>
Russian Federation	<b>Russian Federation</b>	0.97	0.00	0.97	100.0%
	<b>Total</b>	<b>0.97</b>	<b>0.00</b>	<b>0.97</b>	<b>100.0%</b>
United Kingdom	<b>Ireland</b>	0.00	4.10	-4.10	-100.0%
	<b>United Kingdom</b>	5 546.21	5 235.77	310.44	5.9%
	<b>Total</b>	<b>5 546.21</b>	<b>5 239.87</b>	<b>306.34</b>	<b>5.8%</b>
<b>Total</b>		<b>19 994.02</b>	<b>18 879.23</b>	<b>1 114.79</b>	<b>5.9%</b>

**Indemnity:** Agri-hub shall take all reasonable precautions to ensure that any information and data provided by Agri-hub from its information sources are correct. Neither Agri-hub nor any of its directors, employees or information sources take any responsibility for action or losses that might occur as a result of the usage of this information.