



Blueberries Exports from South Africa

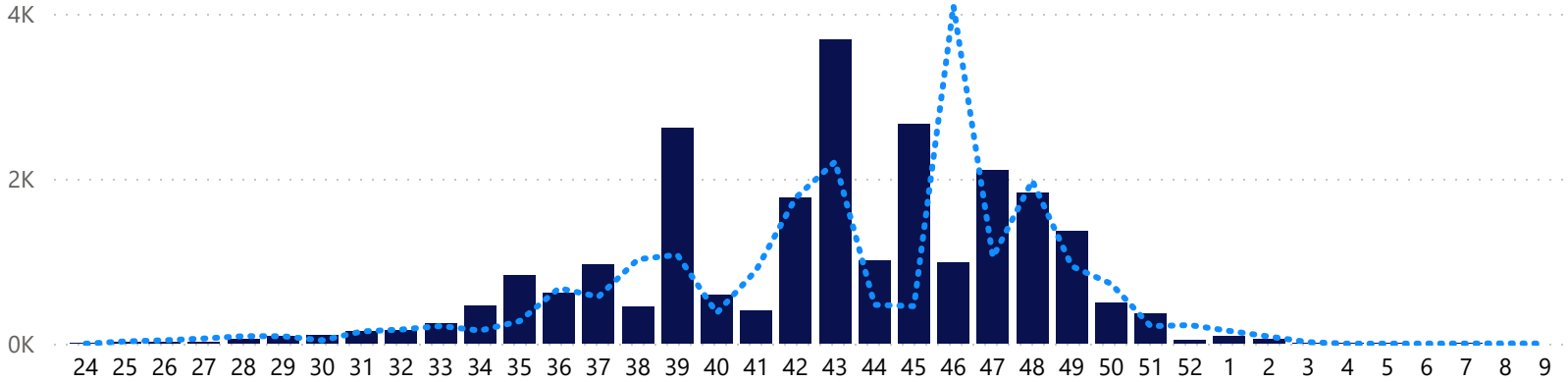
Season 2022/2023 - Week 9

(Report in Tonnage)



21/22 vs 22/23 per Week

● Confirmed ● Unconfirmed ● 21/22



Comparison Report Week (21/22 vs 22/23)

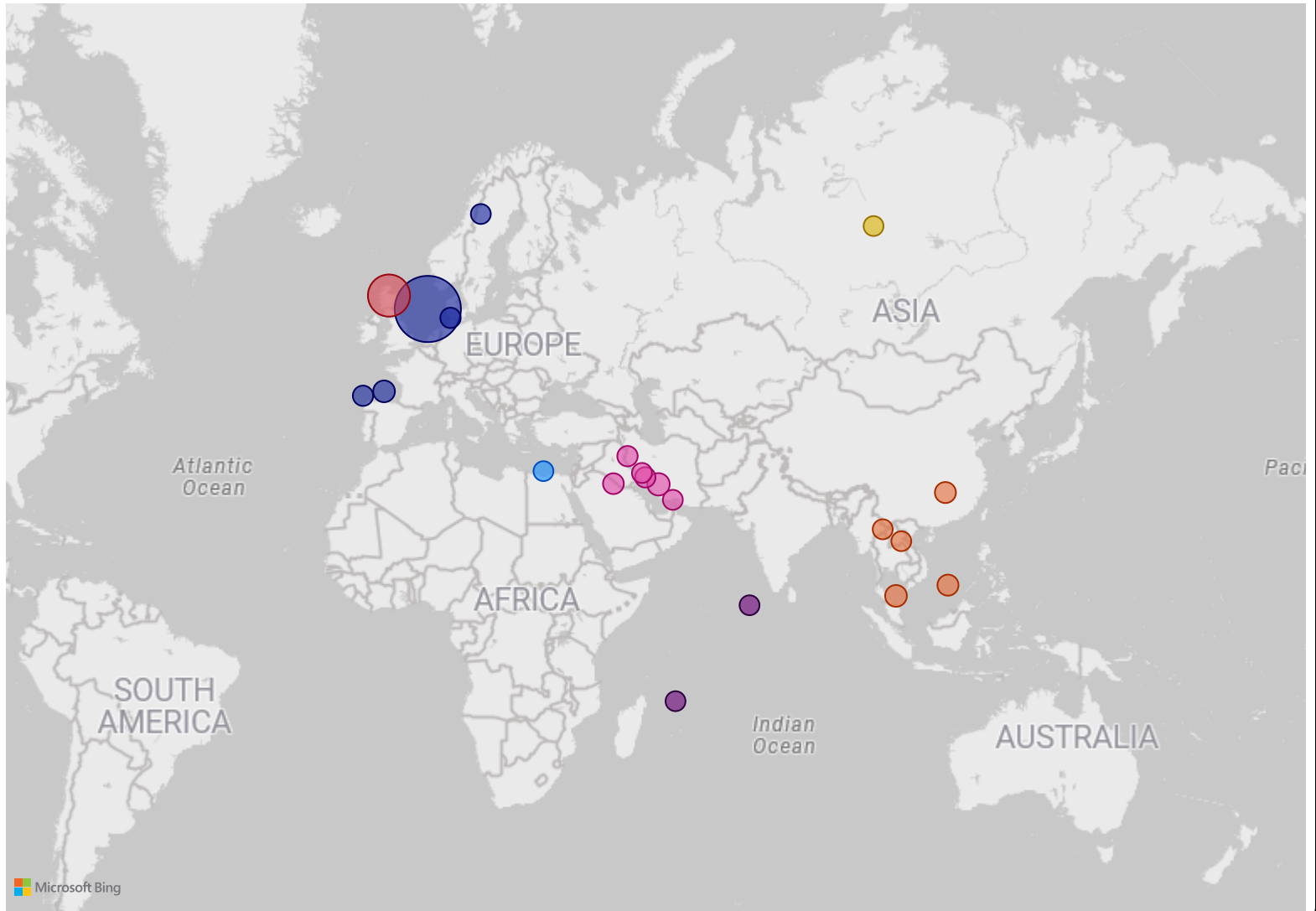
Region	22/23 Air	22/23 Sea	22/23 Total	21/22 Air	21/22 Sea	21/22 Total	Diff%
Africa							
Europe							
Far East & Asia	0.00	0.00	0.00	1.15	0.00	1.15	-100.0%
Indian Ocean Islands							
Middle East							
Other							
Russian Federation							
United Kingdom							
USA & Canada							
Total	0.00	0.00	0.00	1.15	0.00	1.15	-100.0%

Comparison Year To Date (21/22 vs 22/23)

Region	22/23 Air	22/23 Sea	22/23 Total	21/22 Air	21/22 Sea	21/22 Total	Diff%
Africa	0.27	0.00	0.27	0.00	0.00	0.00	100.0%
Europe	751.41	14 168.55	14 919.96	1 183.75	11 593.19	12 776.94	16.8%
Far East & Asia	903.39	369.49	1 272.88	676.87	360.15	1 037.02	22.7%
Indian Ocean Islands	16.08	3.46	19.54	1.02	0.49	1.51	1194.0%
Middle East	853.54	521.78	1 375.32	468.38	460.94	929.32	48.0%
Other	0.00	0.00	0.00	5.41	0.00	5.41	-100.0%
Russian Federation	0.97	0.00	0.97	0.00	19.44	19.44	-95.0%
United Kingdom	1 214.78	5 431.27	6 646.05	1 320.41	4 217.14	5 537.55	20.0%
USA & Canada							
Total	3 740.44	20 494.55	24 234.99	3 655.84	16 651.35	20 307.19	19.3%

Exports per Country

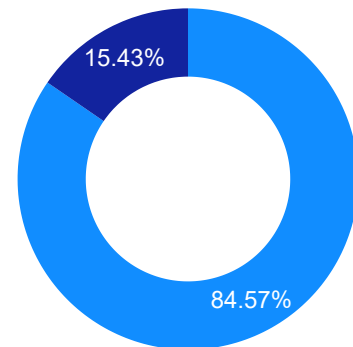
Region ● Africa ● Europe ● Far East & Asia ● Indian Ocean Isla... ● Middle East ● Other ● Russian Federation ● United Kingd...



YTD Export Growth % (21/22 vs 22/23)

Region	22/23	21/22	Diff%
⊕ Africa	0.27	0.00	100.0%
⊕ Europe	14 919.96	12 776.94	16.8%
⊕ Far East & Asia	1 272.88	1 037.02	22.7%
⊕ Indian Ocean Islands	19.54	1.51	1194.0%
⊕ Middle East	1 375.32	929.32	48.0%
⊕ Other	0.00	5.41	-100.0%
⊕ Russian Federation	0.97	19.44	-95.0%
⊕ United Kingdom	6 646.05	5 537.55	20.0%
⊕ USA & Canada			
Total	24 234.99	20 307.19	19.3%

Transport Type



Transport ● Sea ● Air

Exports per Region and Country

Region	Country	22/23	21/22	Diff	Diff%
Africa	Egypt	0.27	0.00	0.27	100.0%
	Total	0.27	0.00	0.27	100.0%
Europe	Denmark	0.00	1.68	-1.68	-100.0%
	France	226.10	290.38	-64.28	-22.1%
	Germany	141.42	196.40	-54.98	-28.0%
	Ireland	0.00	4.10	-4.10	-100.0%
	Netherlands	13 859.69	11 620.01	2 239.68	19.3%
	Portugal	130.56	0.00	130.56	100.0%
	Spain	555.86	664.37	-108.51	-16.3%
	Sweden	6.33	0.00	6.33	100.0%
	Total	14 919.96	12 776.94	2 143.02	16.8%
	Far East & Asia	Cambodia	0.68	1.44	-0.76
Hong Kong		336.39	208.88	127.51	61.0%
Malaysia		345.14	322.66	22.48	7.0%
Singapore		554.31	469.73	84.58	18.0%
Thailand		36.36	34.31	2.05	6.0%
Total		1 272.88	1 037.02	235.86	22.7%
Indian Ocean Islands	Maldives	1.01	0.00	1.01	100.0%
	Mauritius	15.72	1.02	14.70	1441.2%
	Reunion	2.81	0.49	2.32	473.5%
	Total	19.54	1.51	18.03	1194.0%
Middle East	Bahrain	36.76	19.21	17.55	91.4%
	Kuwait	143.99	61.22	82.77	135.2%
	Oman	15.46	22.76	-7.30	-32.1%
	Qatar	153.65	32.37	121.28	374.7%
	Saudi Arabia	267.49	141.07	126.42	89.6%
	United Arab Emirates	757.97	652.69	105.28	16.1%
	Total	1 375.32	929.32	446.00	48.0%
Other	Unknown	0.00	5.41	-5.41	-100.0%
	Total	0.00	5.41	-5.41	-100.0%
Russian Federation	Russian Federation	0.97	19.44	-18.47	-95.0%
	Total	0.97	19.44	-18.47	-95.0%
United Kingdom	United Kingdom	6 646.05	5 537.55	1 108.50	20.0%
	Total	6 646.05	5 537.55	1 108.50	20.0%
Total		24 234.99	20 307.19	3 927.80	19.3%

Indemnity: Agri-hub shall take all reasonable precautions to ensure that any information and data provided by Agri-hub from its information sources are correct. Neither Agri-hub nor any of its directors, employees or information sources take any responsibility for action or losses that might occur as a result of the usage of this information.