

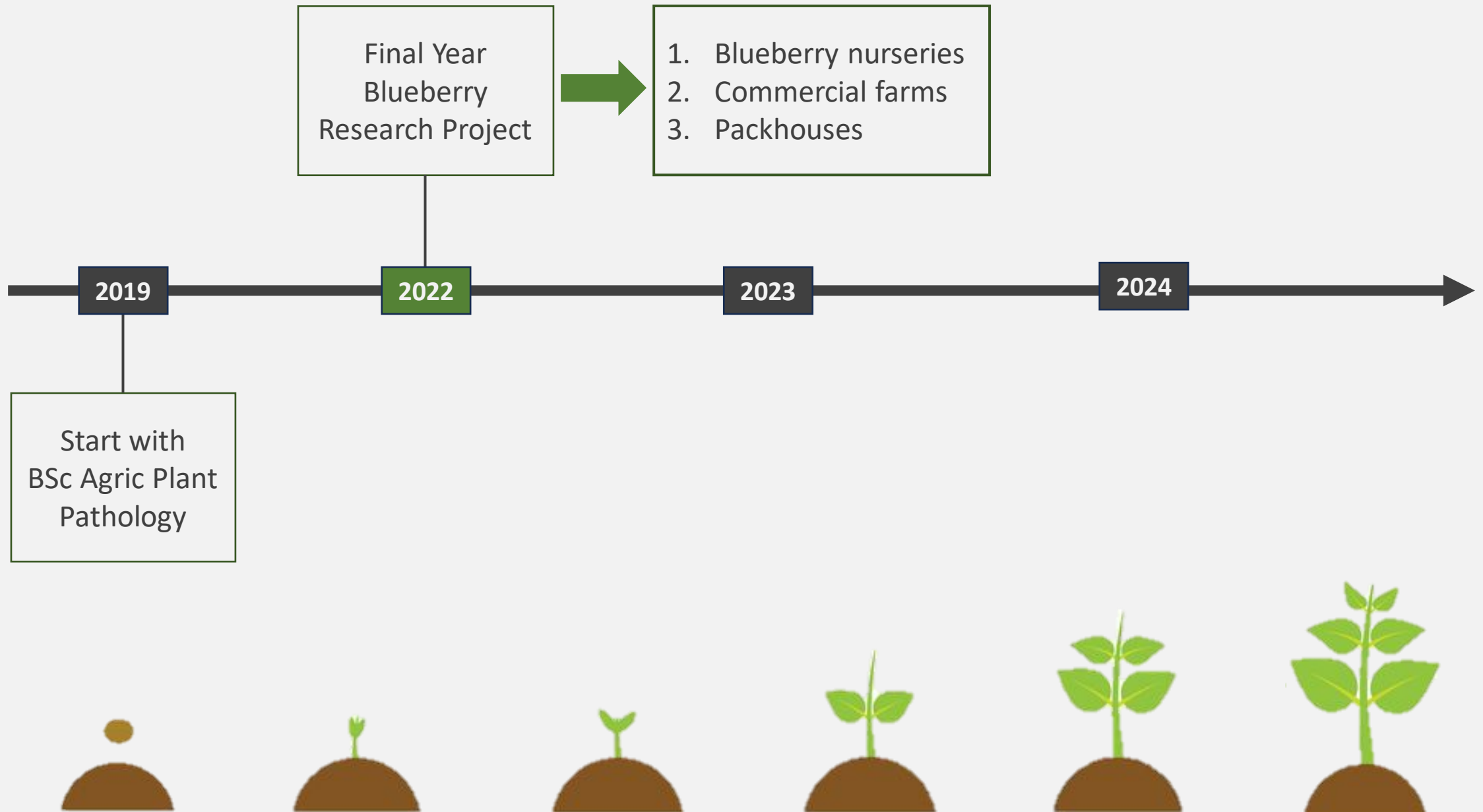


# Aggressiveness and fungicide sensitivity of *Alternaria alternata* isolates from blueberry orchards in South Africa

By: Inge Coetzee  
Supervisor: Prof L. Korsten  
Co-supervisors: Dr. W. de Bruin, Dr. N. Siyoum & Dr. D. Nsibo



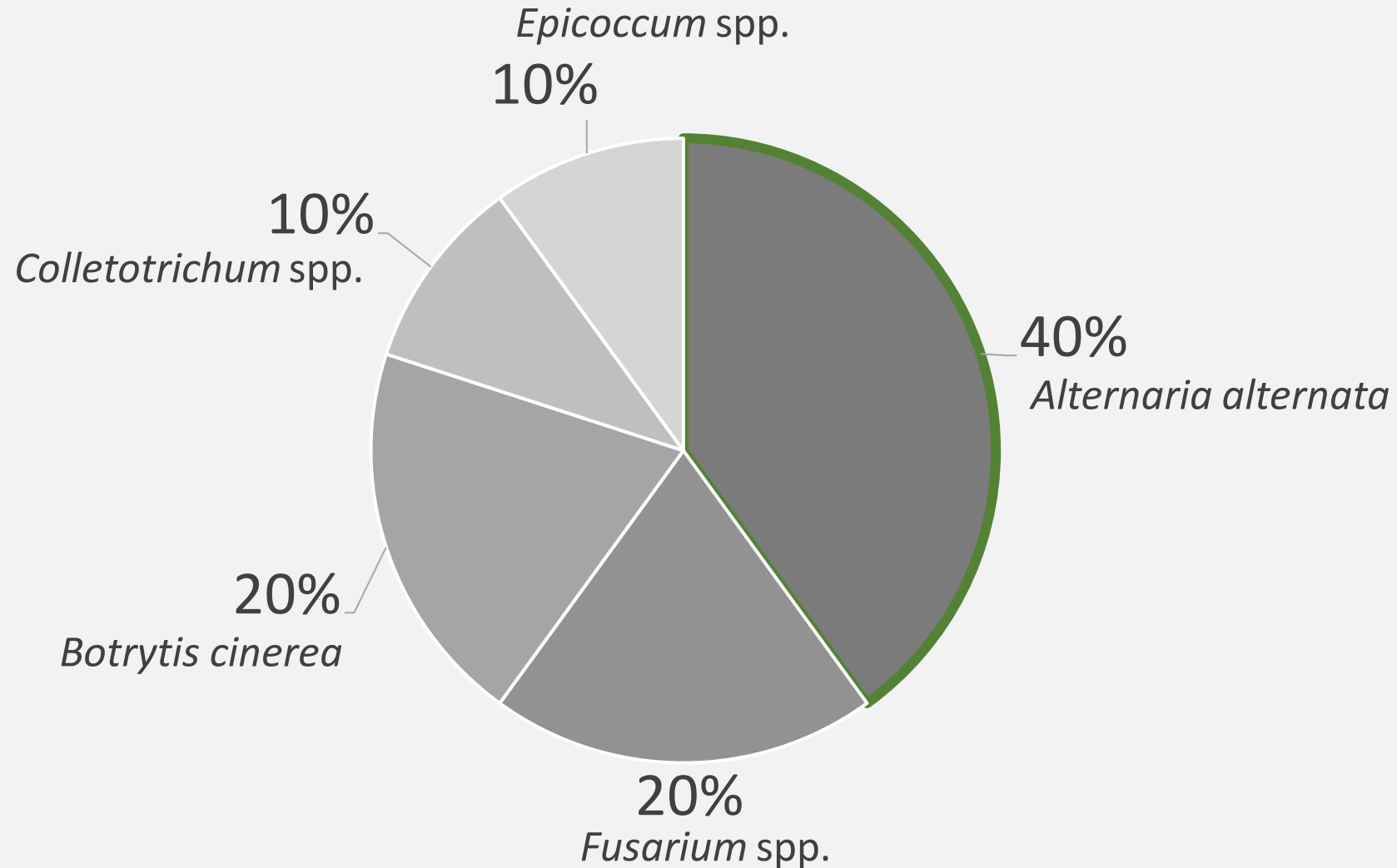
# Blueberry Research Timeline



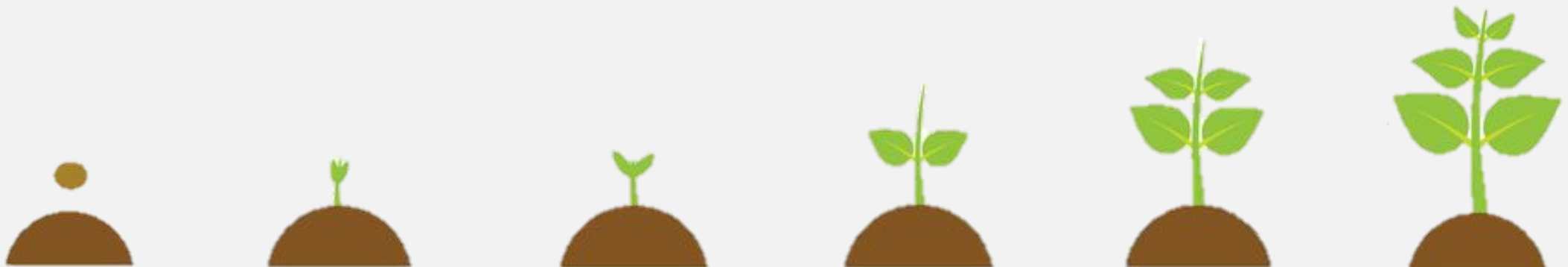
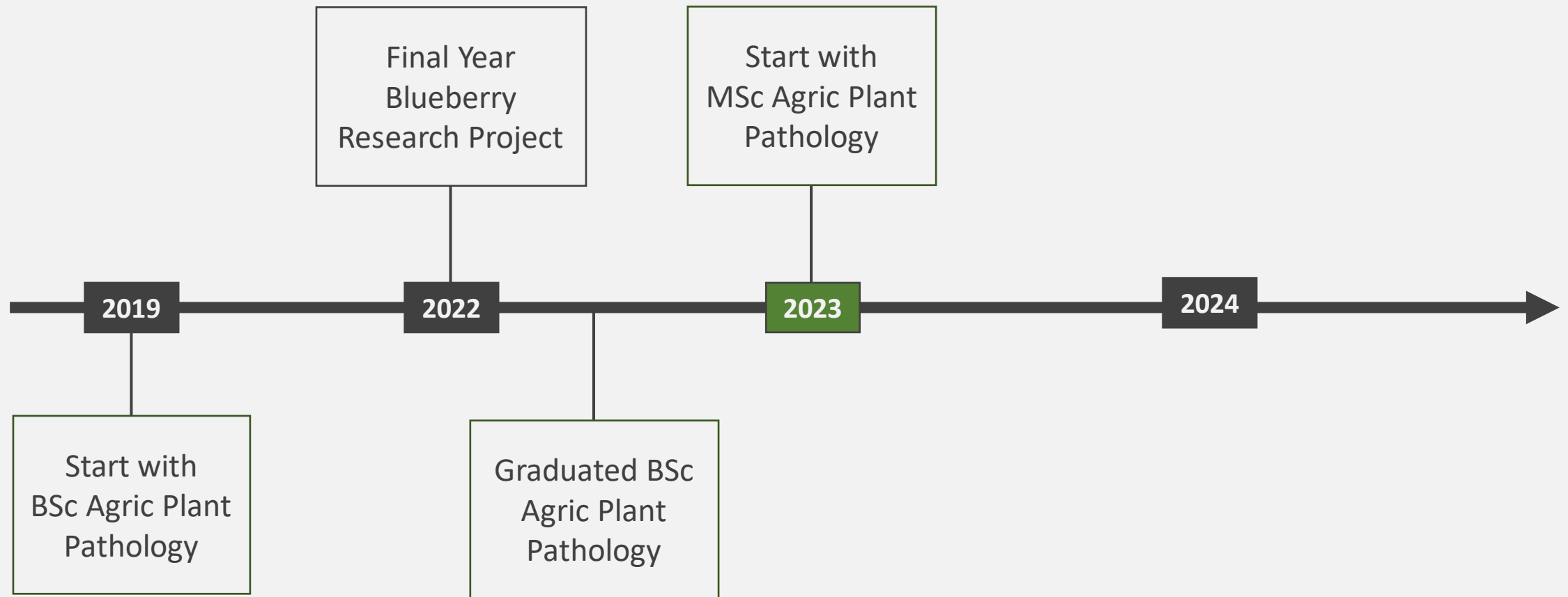
# 2022 Plant Pathology Final Year Mini Research Projects on Blueberries

## Sampled Sites:

1. Nurseries
2. Commercial production farms
3. In & out of season packhouses



# Blueberry Research Timeline

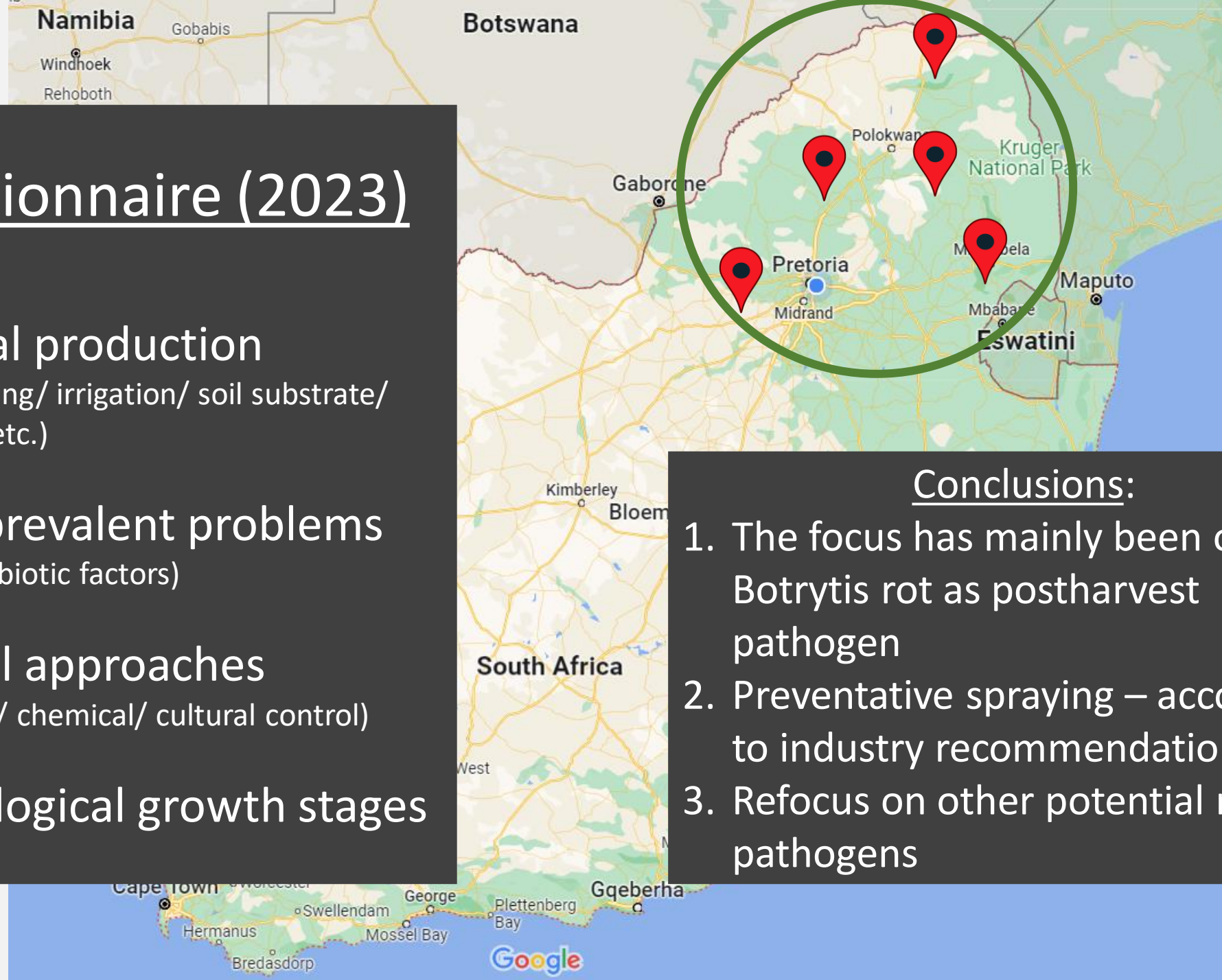


# Questionnaire (2023)

1. General production  
(Row spacing/ irrigation/ soil substrate/ fertilizers etc.)
2. Most prevalent problems  
(Biotic & abiotic factors)
3. Control approaches  
(Biological/ chemical/ cultural control)
4. Phenological growth stages

## Conclusions:

1. The focus has mainly been on Botrytis rot as postharvest pathogen
2. Preventative spraying – according to industry recommendations
3. Refocus on other potential rot pathogens



# Honey bee dissemination of *Bacillus subtilis* to citrus flowers for control of *Alternaria*

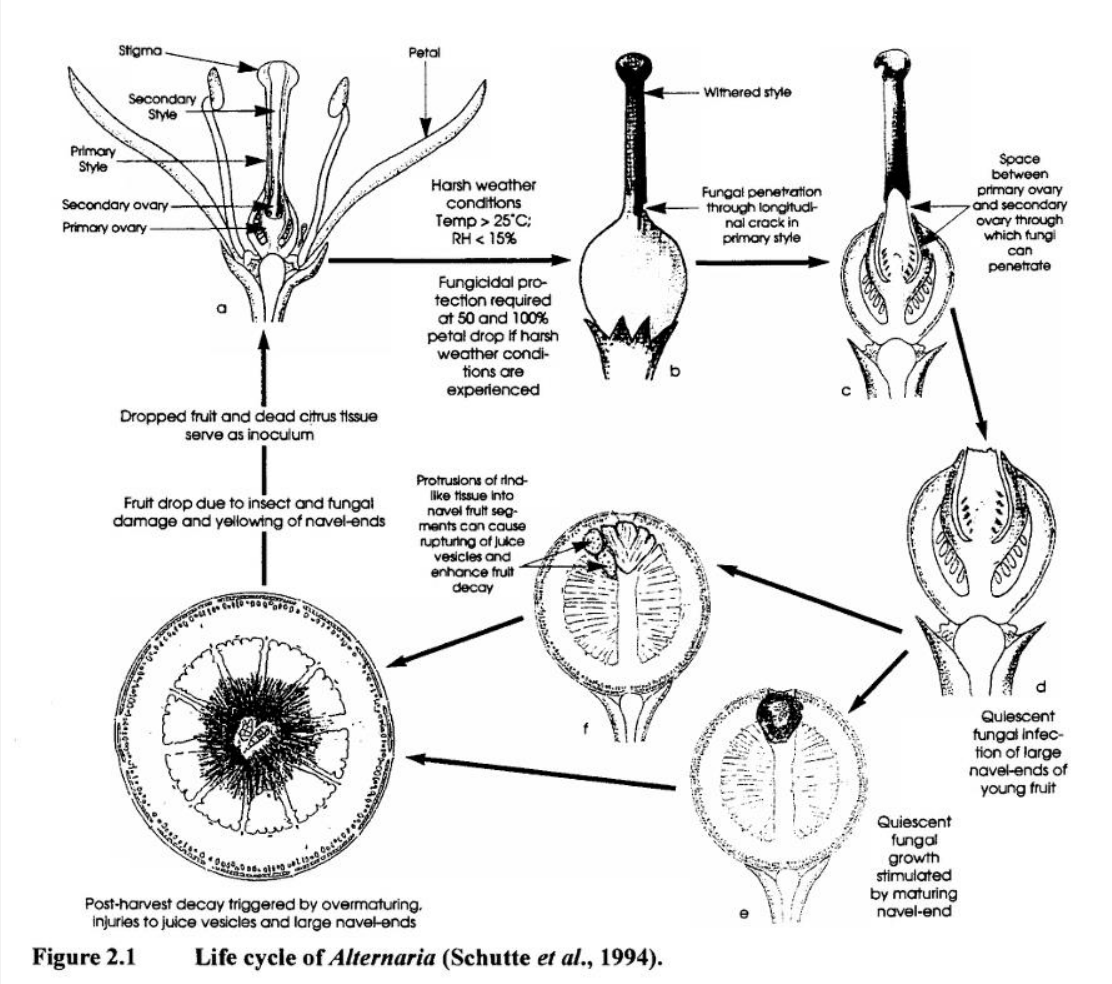
BY

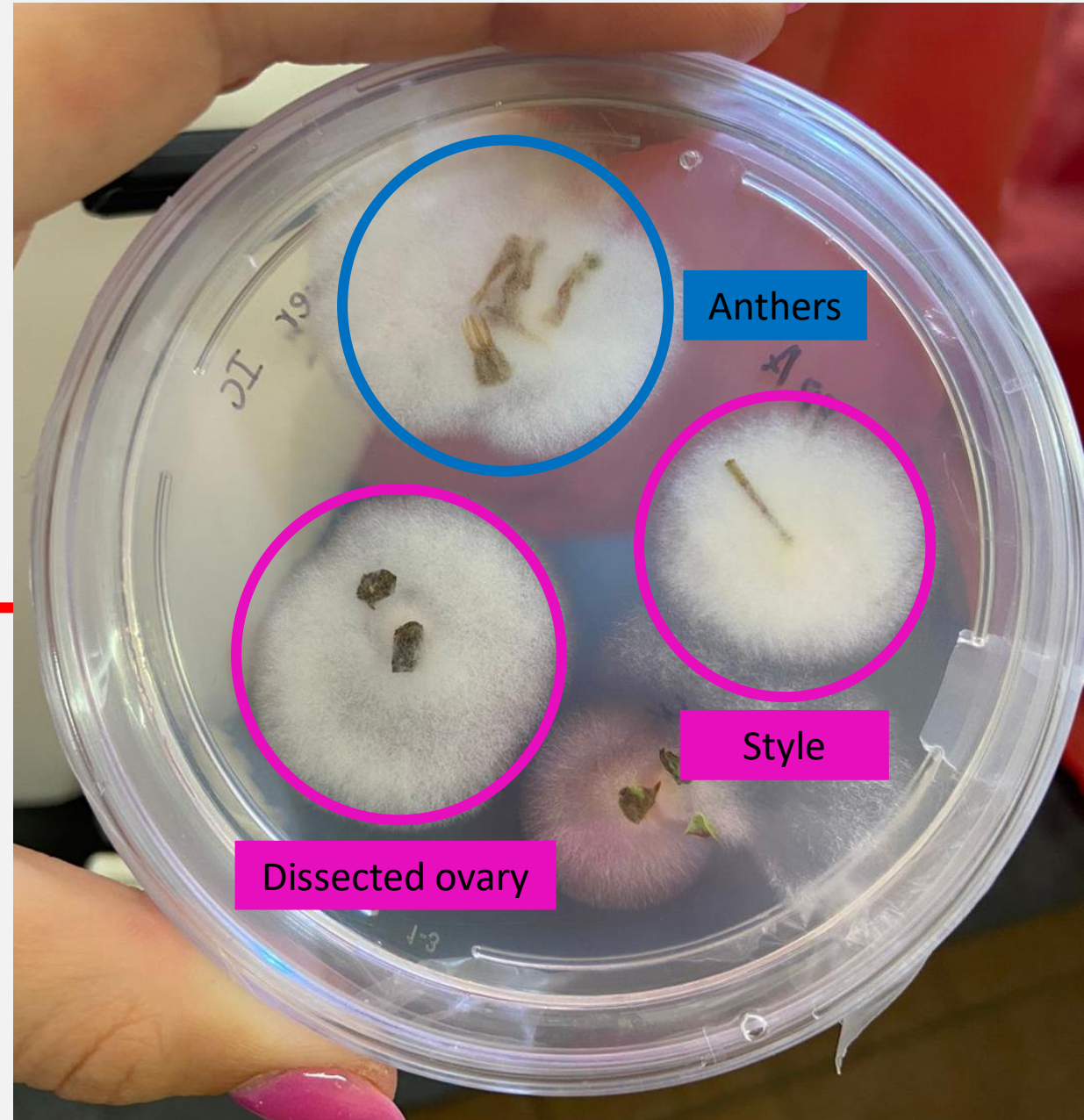
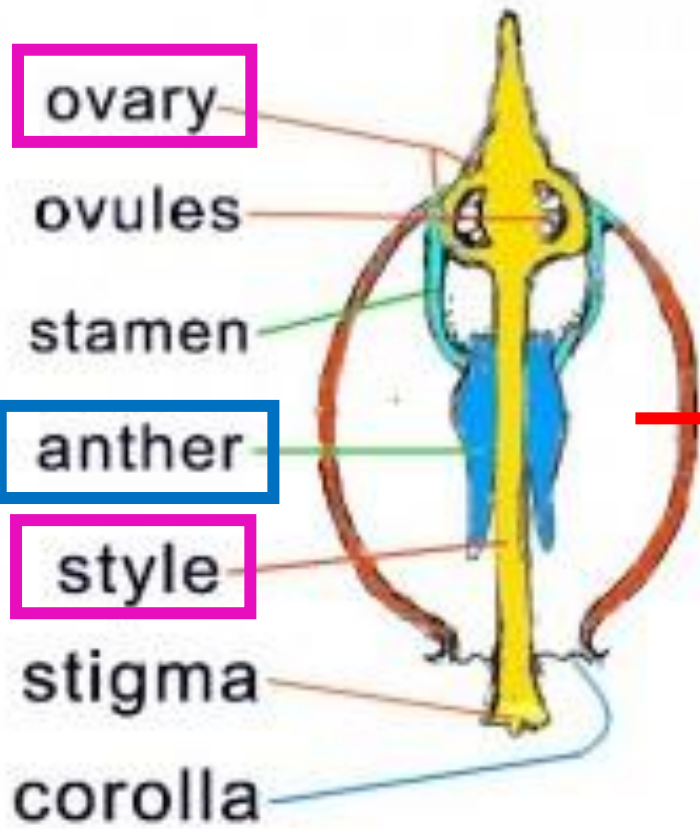
MOGALATJANE PATRICK MPHAHLELE

Submitted to the Faculty of Natural and Agricultural Sciences  
 Department of Microbiology and Plant Pathology  
 University of Pretoria

In partial fulfillment of the requirements for the degree of  
 M Inst Agrar (Plant Protection)

December 2003

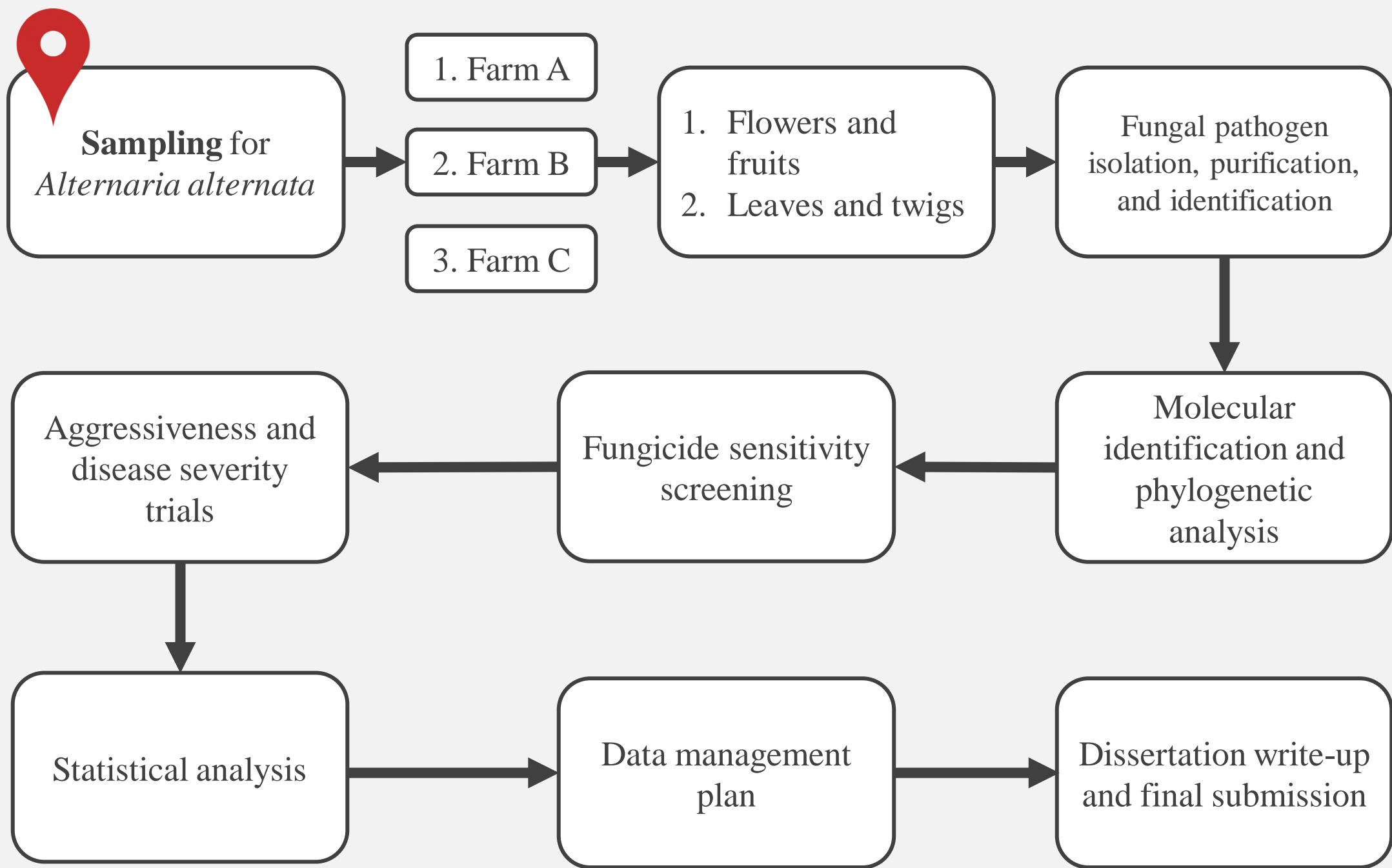


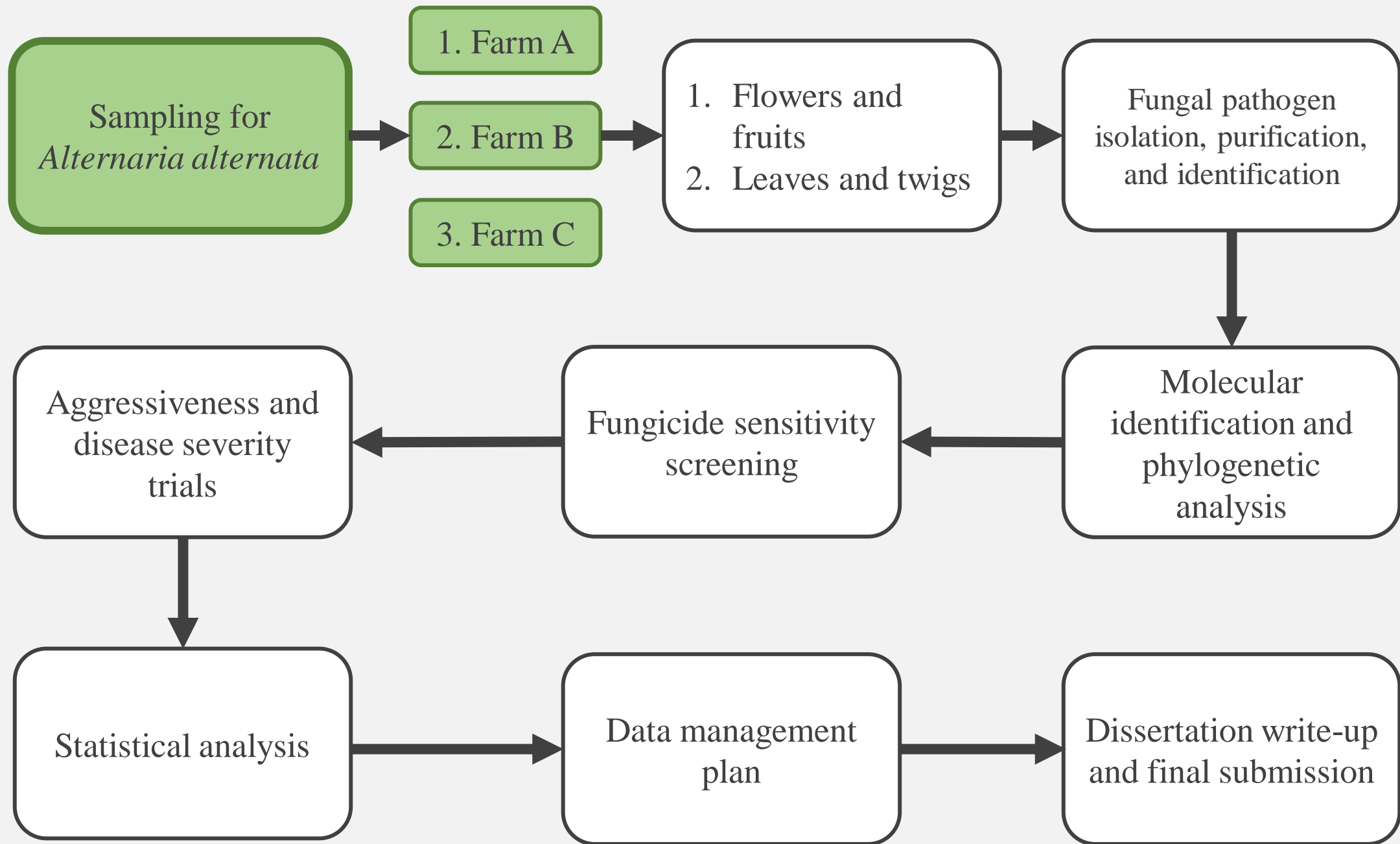


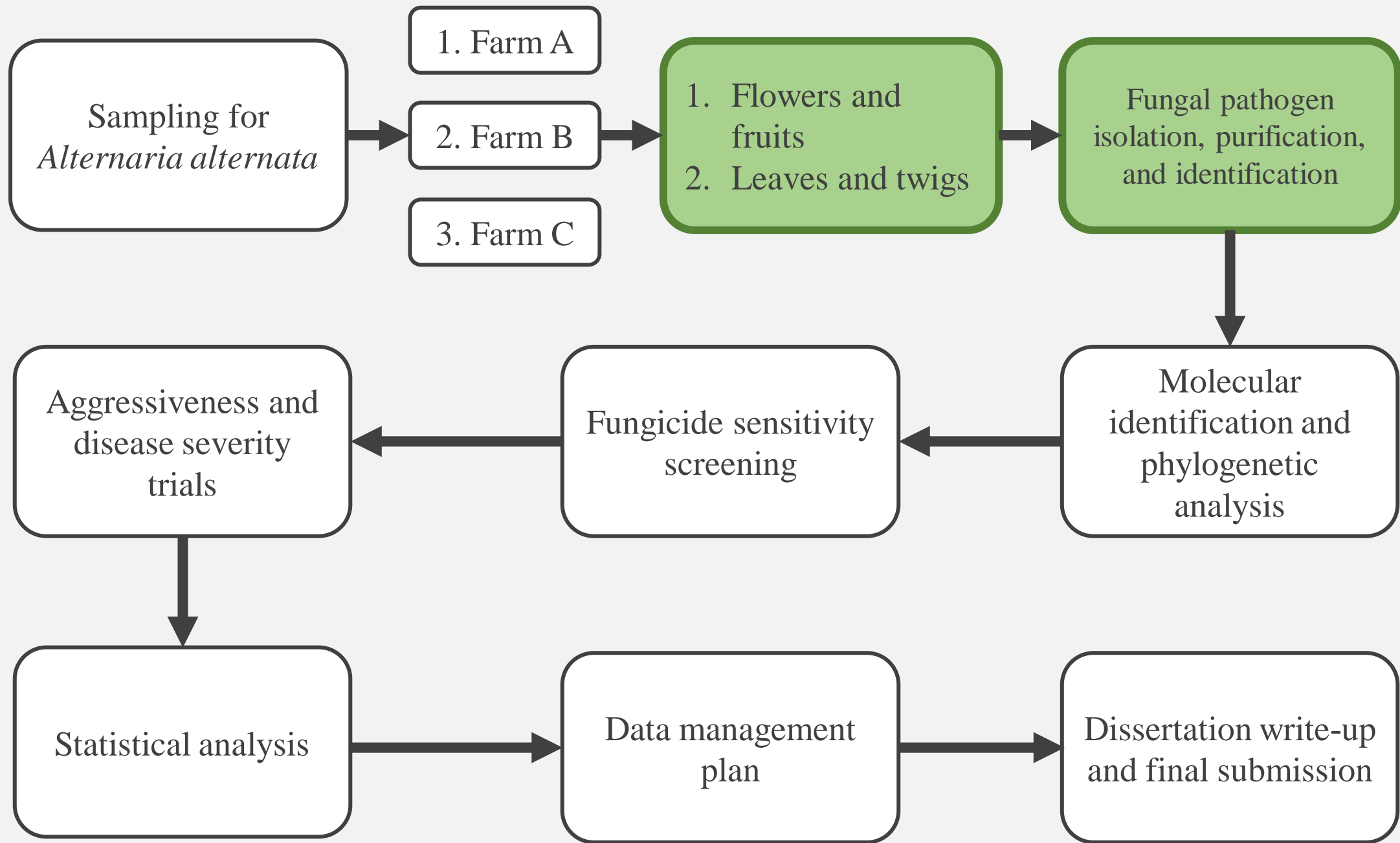
# Aim

To assess the **disease profile and the aggressiveness** of *Alternaria alternata* in northern blueberry production regions of SA and to determine their **sensitivity to fungicides** currently used by the industry.









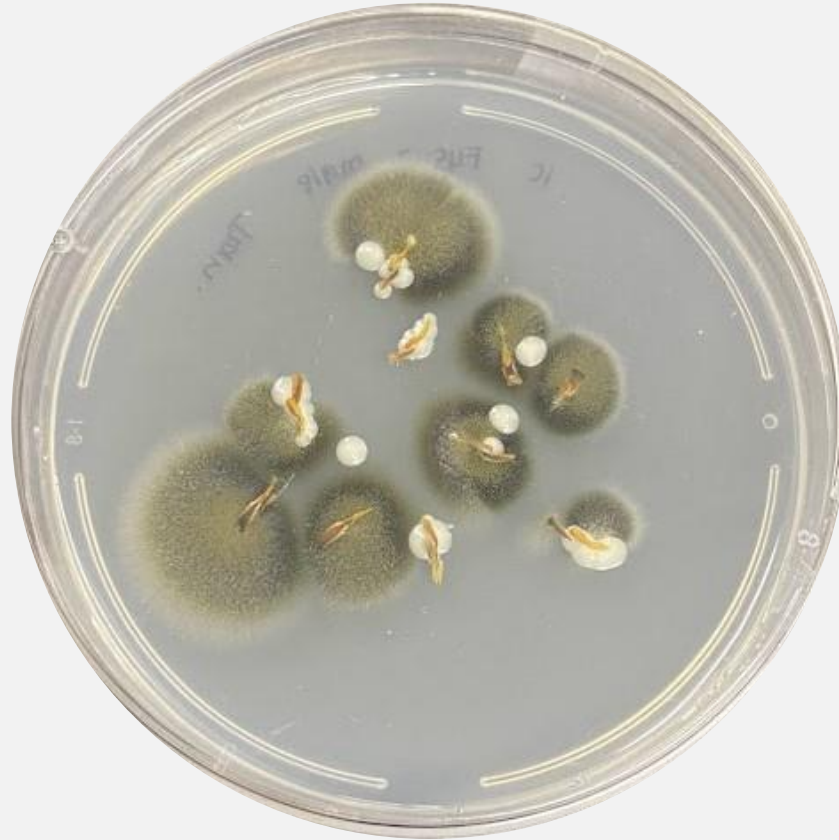
# Processing Procedure



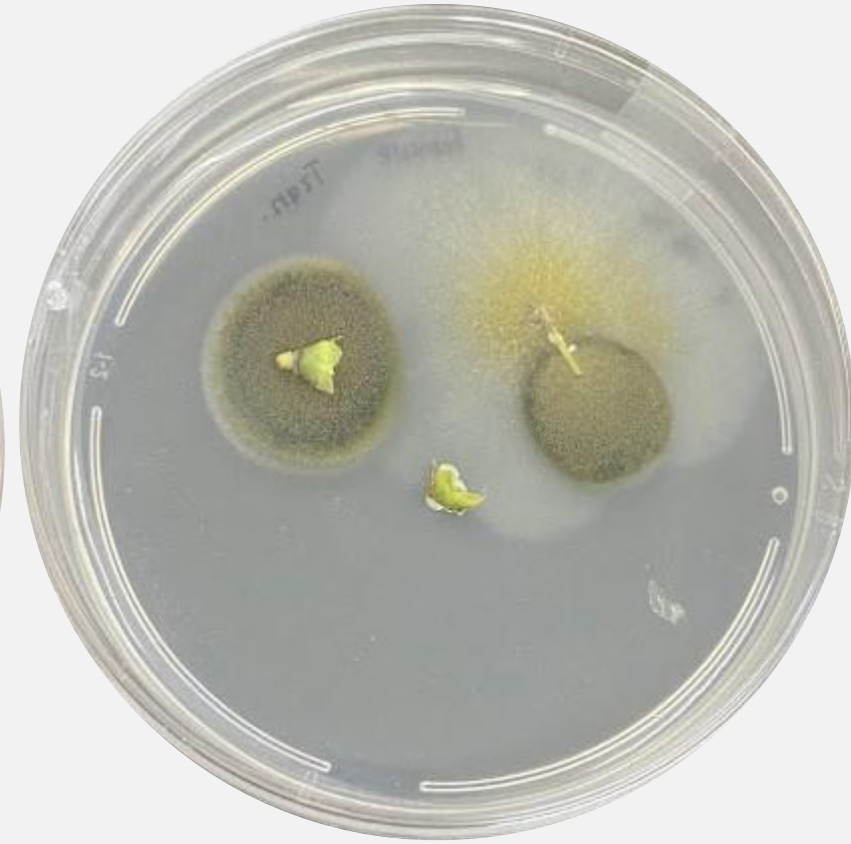
**Blueberry Flower**



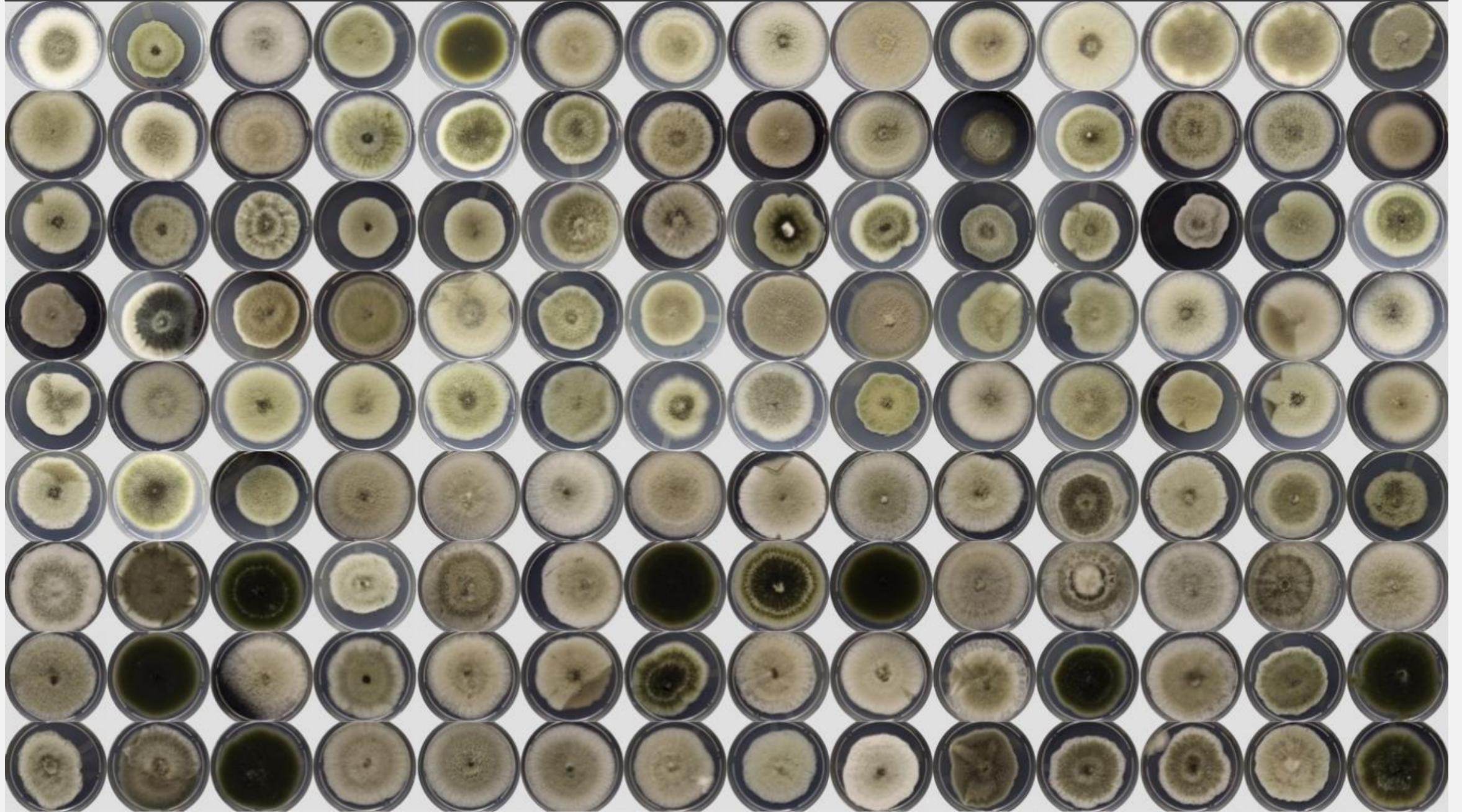
**Anthers (male)**



**Ovary & Style (female)**



Morphology of *A. alternata* isolated from blueberry fruits/ leaves/ twigs



<b>Total number of <i>A. alternata</i> isolates</b>			
	<b>Flowers/ Fruit</b>	<b>Leaves</b>	<b>Twigs</b>
<b>Farm A_ Region 1</b>			
<b>1<sup>st</sup> trip_30 May 2023</b>	24	50	45
<b>2<sup>nd</sup> trip_ 11 August 2023</b>	14	37	51
<b>Farm B_ Region 2</b>			
<b>1<sup>st</sup> trip_19 June 2023</b>	6	10	8
<b>2<sup>nd</sup> trip_ 27 July 2023</b>	33	29	23
<b>Farm C_ Region 3</b>			
<b>1<sup>st</sup> trip_2 June 2023</b>	37	11	8
<b>2<sup>nd</sup> trip_ 2 August 2023</b>	23	39	18

\*27 plants sampled from per variety

# *Alternaria* spp. Disease cycle

## Infection site:

1. Flowers
2. Natural openings
3. Wounds



## Primarily an issue when:

1. Fruits overripen on the bushes
2. Damage during harvest
3. When the cold chain gets broken

**1. Infection**

**2. Growth**

**4. Spread**

**3. Reproduction**

## Spore formation:

1. High relative humidity/ rain
2. Longer leaf-wetting periods

Symptoms of berries originate from the calyx cup as berries start to ripen

## Spore characteristics:

1. Club-shape spores
2. Form on ripe fruit
3. Germinate @ 20-25°C

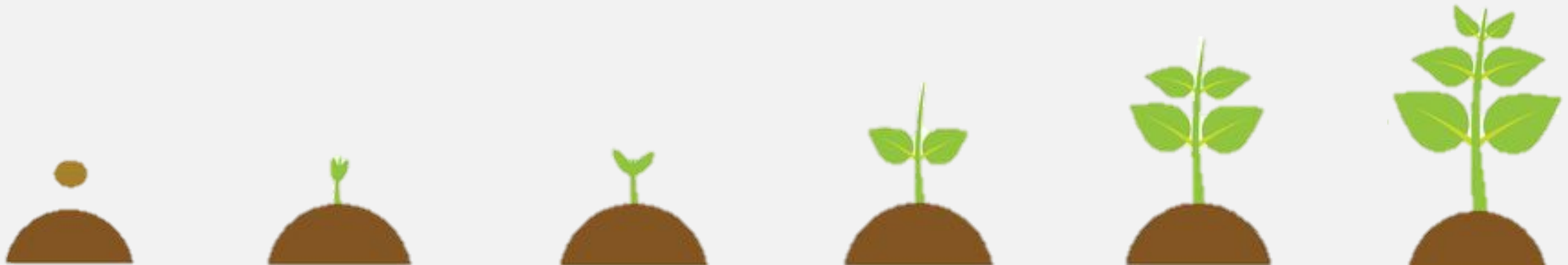
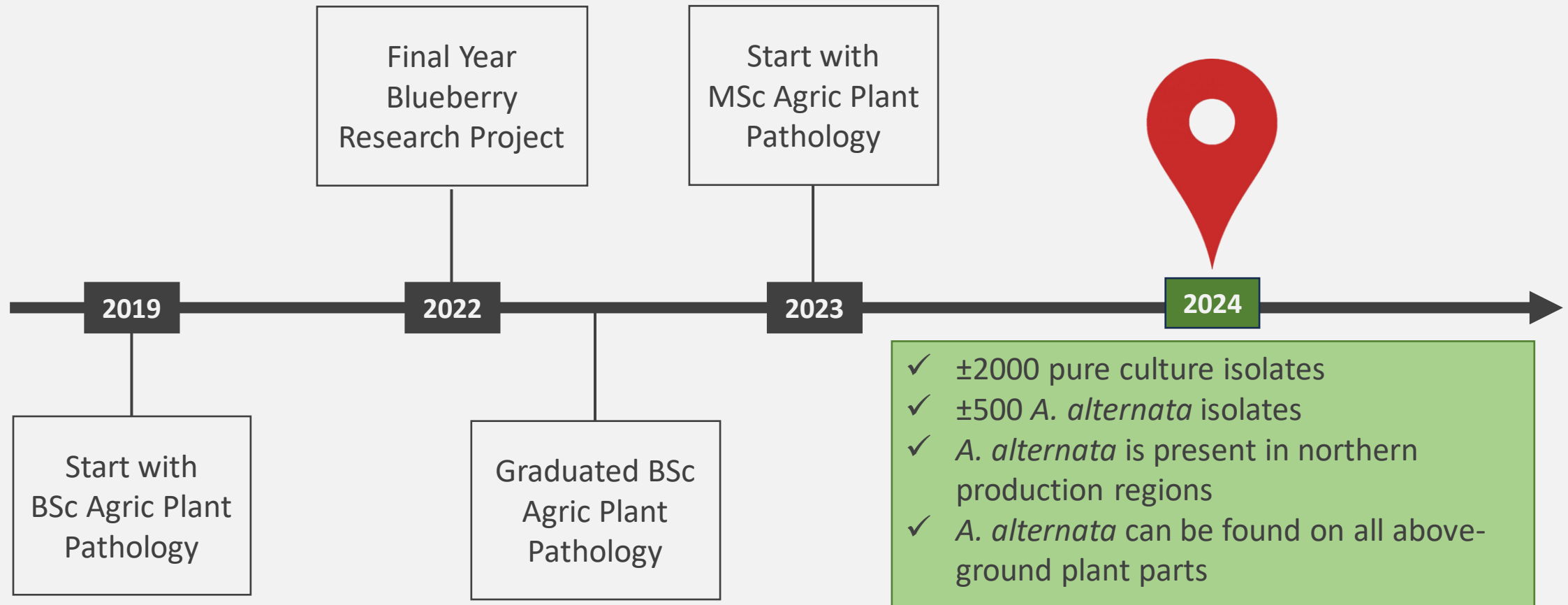
## Overwinter:

1. Infected canes
2. Old twigs
3. Plant debris/ organic matter

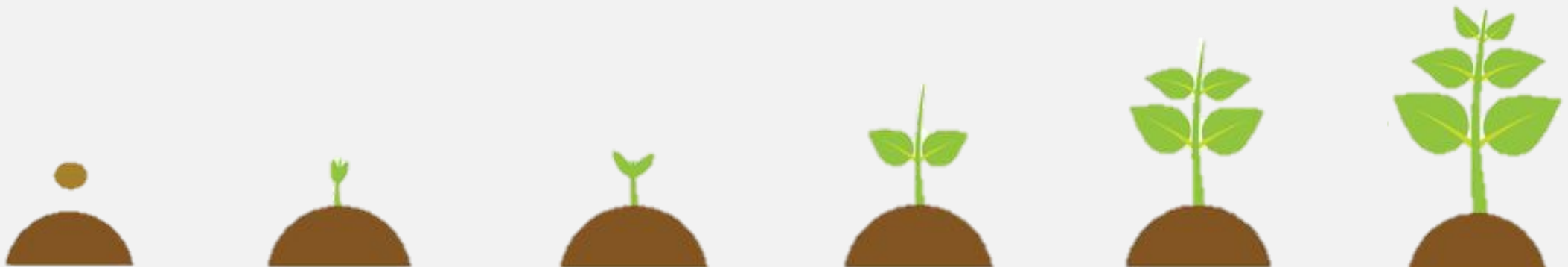
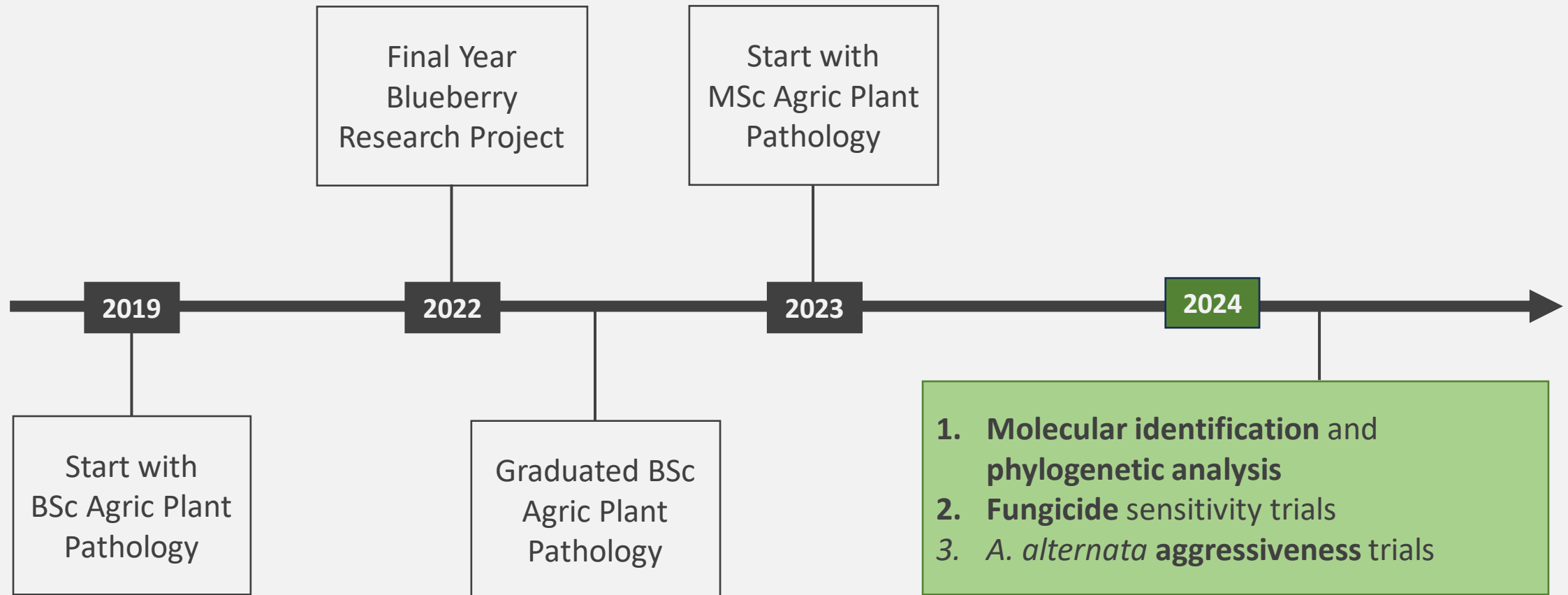




# Blueberry Research Timeline



# Blueberry Research Timeline



# Thank You

For more information, please contact us:

Dr. W. de Bruin

[willeke.debruin@up.ac.za](mailto:willeke.debruin@up.ac.za)

072 241 6467



UNIVERSITEIT VAN PRETORIA  
UNIVERSITY OF PRETORIA  
YUNIBESITHI YA PRETORIA



NRF  
National  
Research  
Foundation



BERRIES ZA  
SUPPORTING SOUTH AFRICAN GROWERS