



Western Cape  
Government

FOR YOU



Department of Agriculture

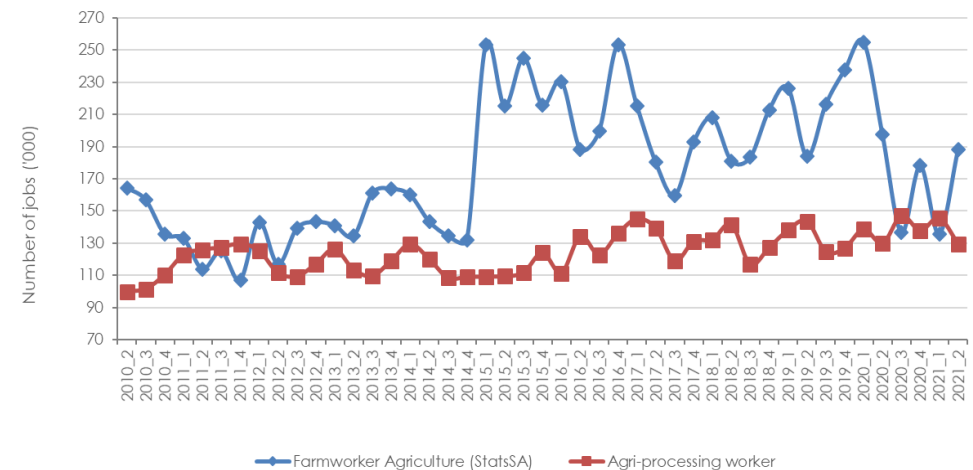
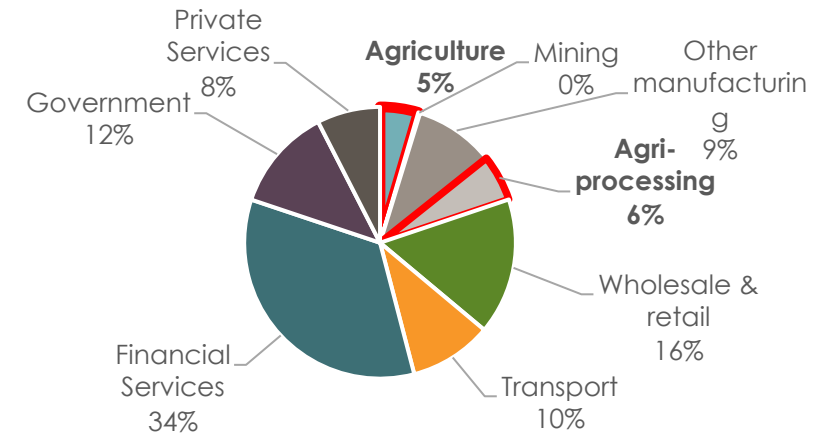
# OVERVIEW OF THE DEPARTMENT – ANNUAL TECHNICAL AND TRADE SYMPOSIUM, BERRY.ZA

Date: 31 May 2024

# Western Cape Agricultural Sector

- **Agriculture & Agri processing = 11% of Western Cape GDP**
- Employment in Western Cape (QLFS Q4 of 2023):
  - Agriculture = 210 710
  - Agri processing = 216 283
  - Combined & corrected = 426 993
  - 576 (0,1%) more than Q4 of 2022 and 106 257 (33,1%) more than Q4 of 2014
  - **Combined = 15,2 % of all jobs in the Province**
- Rural footprint:
  - Most competitive sector in the economy of each of the 5 rural districts
  - 2<sup>nd</sup> most competitive is tourism – with strong agricultural foundations.
- Export:
  - 8 of the Ten biggest export products from the Western Cape has an agricultural foundation.
  - For every 5% increase / decrease in agricultural exports, 22 951 jobs are created / destroyed. Two thirds are off-farm.
  - **66% of the value of Western Cape agricultural production gets exported.**
  - More than 50% of South Africa's agricultural exports originates in the Western

Western Cape Sectoral break-down : 2020



# Ministerial Priorities aligned to Western Cape Priorities



# Sub-outcomes

OUTCOME	SUB-OUTCOME
<b>1. Increased agricultural production in a sustainable manner</b>	1.1 At least maintain the export position of the provincial agricultural sector 1.2 Enhance the agri-processing value-add in the province 1.3 Increase sustainable agricultural production (primary provincial commodities) 1.4 Optimise the sustainable utilisation of water and land resources 1.5 <b>Enhance the Climate Change resilience of the Sector</b>
<b>2. Improved food security and safety</b>	2.1 Increase access to community/household produced food 2.2 Ensure affordability of food (Minimise food inflation or reduce inflationary costs as indicators) 2.3 Ensure that animal products are safe for consumption.
<b>3. Transformed and inclusive Agricultural Sector</b>	3.1 Improve the success of agricultural activity among black farmers 3.2 Increase relevant skills within the agricultural sector 3.3 Improve the participation of youth, women and people with disabilities in the agricultural economy
<b>4. Innovative and resilient rural economies</b>	4.1 Increase access to agricultural and related economic opportunities for rural communities 4.2 Develop an enabling environment for job creation in the agricultural sector 4.3 Improve safety and security in rural areas

# Principles and strategy over the 2024 MTEF – Principles of cut (composition of expenditure principles)

Agriculture

PREVENTING US FROM DOING (Risks)

Environment

Social

Model of causality linked to sub-outcomes



1.1: Market access: Theory of Change

## Critical Priority Areas (detailed process, SP resulting in 14 sub-outcomes)

- ✓ Increased agricultural production – G4J
- ✓ Market access and Exports – G4J, PFA2
- ✓ Food Security and food safety – wellbeing
- ✓ Ecological infrastructure and River protection works – G4J, PFA4
- ✓ Rural Safety – Safety

Linking sub o

OUTCOME

1. Increased agricultural production in a sustainable manner

2. Improved food security and safety

3. Transformed and inclusive Agricultural Sector

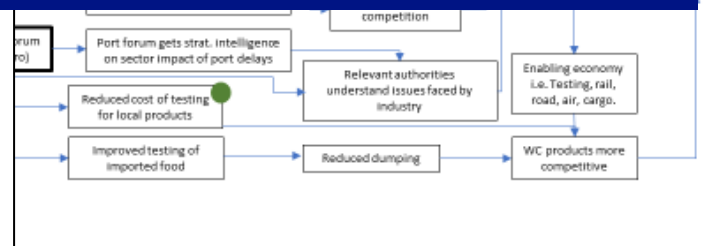
4. Innovative and resilient rural economies

- 2.1 Increase access to community/microsmall producer markets
- 2.2 Ensure affordability of food.
- 2.3 Ensure that animal products are safe for consumption.
- 3.1 Improve the success of agricultural activity among black farmers
- 3.2 Increase relevant skills within the agricultural sector
- 3.3 Improve the participation of youth, women and people with disabilities in the agricultural economy
- 4.1 Increase access to agricultural and related economic opportunities for rural communities
- 4.2 Develop an enabling environment for job creation in the agricultural sector
- 4.3 Improve safety and security in rural areas

Province	Number of participants attended the Ethical trade Facilitator training	700
Province	Numbers of growers registered as members of ethical trade programmes	2 000
Province	Number of activities supported to promote Western Cape products	4



33

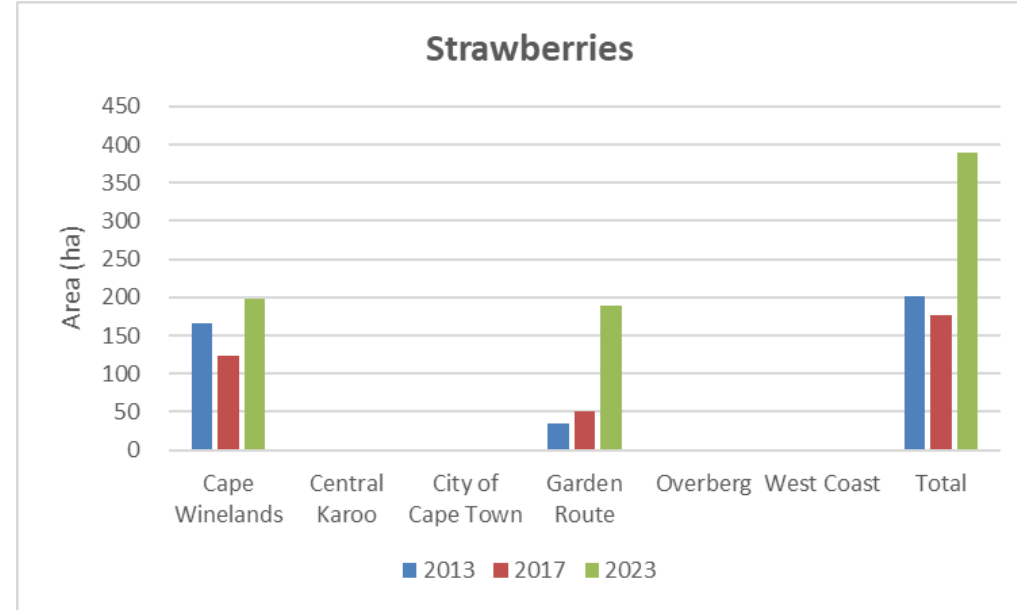
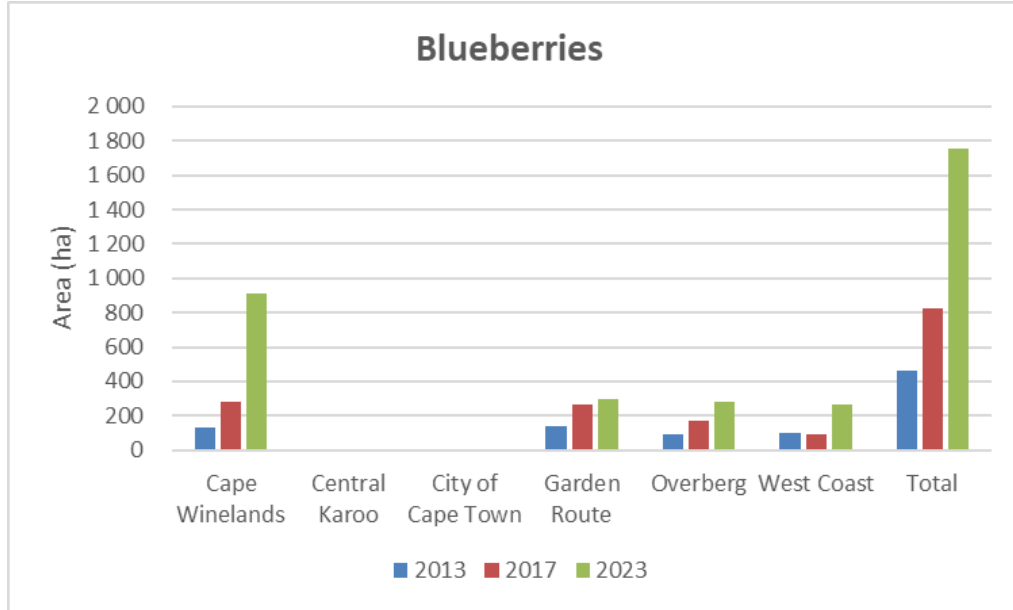




Spatial Intelligence

# The Mapping of Agricultural Commodity Production and Infrastructure in the Western Cape Province

# Trends production areas: Berries



# Key structural changes observed from the 2023 flyover

Massive increase in citrus production in the Western Cape.

Expansion of the almond industry in the Cape Winelands, West Coast, Overberg and Garden Route districts.

The Blueberry industry expansion contraction.

Alternative high value crops in the Southern Cape (Kiwi, pecan nuts, avocados and macadamia).

Constant growth in the deciduous fruit industry (increasing volumes to be exported).

Imploding of the canned fruit industry.

Continued contraction of the wine grape area.



# We connect and co-create with Partners for the Sector we want



# HORTFIN loan financing approvals: 2022 - 2023



							Jobs created (Seasonal and Permanent)	
	Project	Crop	Province	Hortfin loans approved and in disbursement process (2022 to 2023)	Match-funding unlocked (Government-CASP, Industry organisations)	Total Investment value	Seasonal	Permanent
1	Resolute Farm Holdings	Table grapes	WC	R20 900 000	R11 000 000	R31 900 000	296	0
2	Roode Zand Farm Holdings	Table grapes	WC	R6 200 000	R4 100 000	R10 300 000	0	0
3	La Vouere	Stone	WC	R3 700 000	R3 700 000	R7 400 000	26	0
4	Lakeview farming	Pome	WC	R4 400 000	R1 500 000	R5 900 000	42	0
5	SH van der Horst (Loufontein)	Stone/Pome	WC	R9 375 000	R3 000 000	R12 375 000	88	0
6	Altius Trading 237 (Klein Ezeljacht)	Pome	WC	R8 790 000	R1 500 000	R10 290 000	11	0
7	Farm Waveren	Pome	WC	R9 000 000	R2 000 000	R11 000 000	0	0
8	Veritas Wines	Wine	WC	R4 500 000	R1 750 000	R6 250 000	0	0
9	Eksteenskuil Kleinboere	Raisins	NC	R6 500 000	R6 350 000	R12 850 000	0	0
10	Amanzi Farming	Pome	WC	R6 517 153	R11 517 153	R18 034 306	0	0
11	CAP	Table grapes	WC	R16 220 000	R24 330 000	R40 550 000	0	0
12	Siyazama	Table grapes	WC	R16 500 000	R6 400 000	R22 900 000	0	0
13	JD Rovon	Pome	EC	R4 000 000	R3 700 000	R7 700 000	0	0
14	Saamstaan 1	Table grapes	WC	R4 000 000	R6 000 000	R10 000 000	33	0
15	Laasterivier	Pome/Stone	WC	R900 000	R800 000	R1 700 000	64	7
16	A&B Williams	Value chain	WC	R9 200 000	R23 800 000	R33 000 000	78	0
17	DNG Enterprises	Pome	WC	R1 000 000	R1 500 000	R2 500 000	16	0
				<b>R131 702 153</b>	<b>R112 947 153</b>	<b>R244 649 306</b>		

# BFAP Quarterly Risk Assessment: 2023 Q3

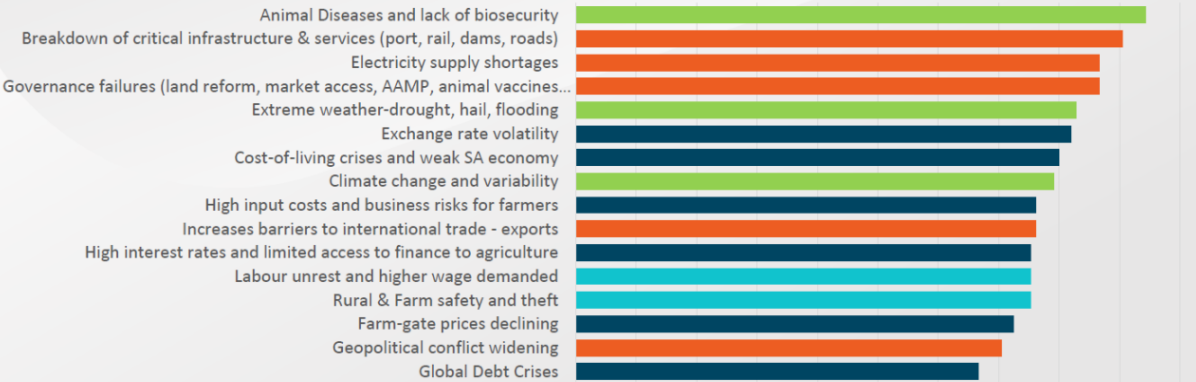
## Scoring all 20 Risks

Results for the probability of occurrence from low to high (1-5)



Probability of Occurrence

0.0 0.5 1.0 1.5 2.0 2.5 3.0 3.5 4.0 4.5 5.0



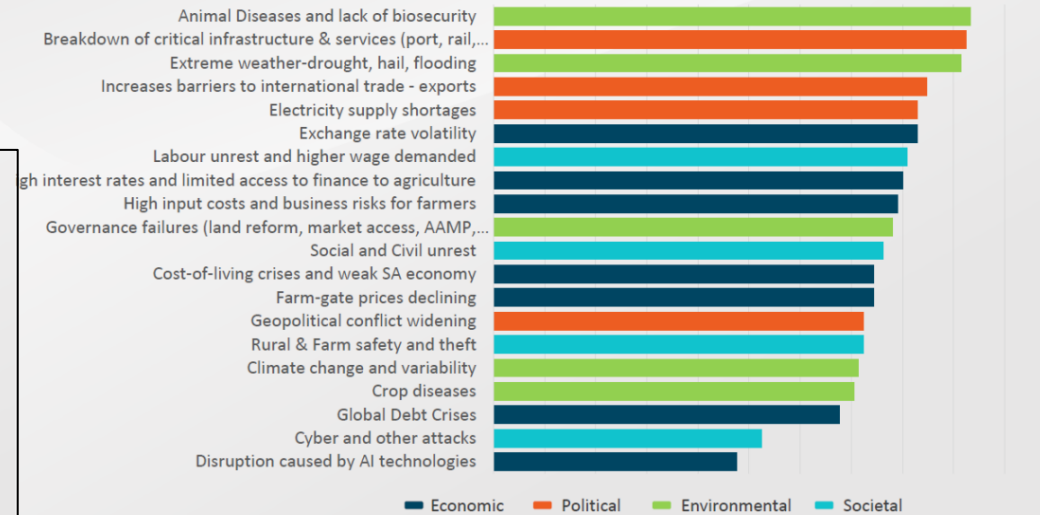
## Scoring all 20 Risks

Results for the severity of impact from low to high (1-5)



Severity of Impact

0.0 0.5 1.0 1.5 2.0 2.5 3.0 3.5 4.0 4.5 5.0



## Risk Impacts: Western Cape Implications



1 Animal Disease & Lack of bio security

2 Breakdown of critical infrastructure & services

3 Extreme weather (drought, hail, flooding..)

4 Electricity supply shortages

5 Cost of living crises

**‘If AGRICULTURE goes wrong, nothing else will have a chance to go right’**

**MS Swaminathan**

# Contact Us



**Western Cape  
Government**



**Mogale Sebopetsa**

Head of Department

---

**Tel:** +27 (0)21 808 5006

**Fax:**

Mogale.sebopetsa@Westerncape.gov.za

[www.westerncape.gov.za](http://www.westerncape.gov.za)

---

Thank you