



# Blueberries Exports from South Africa

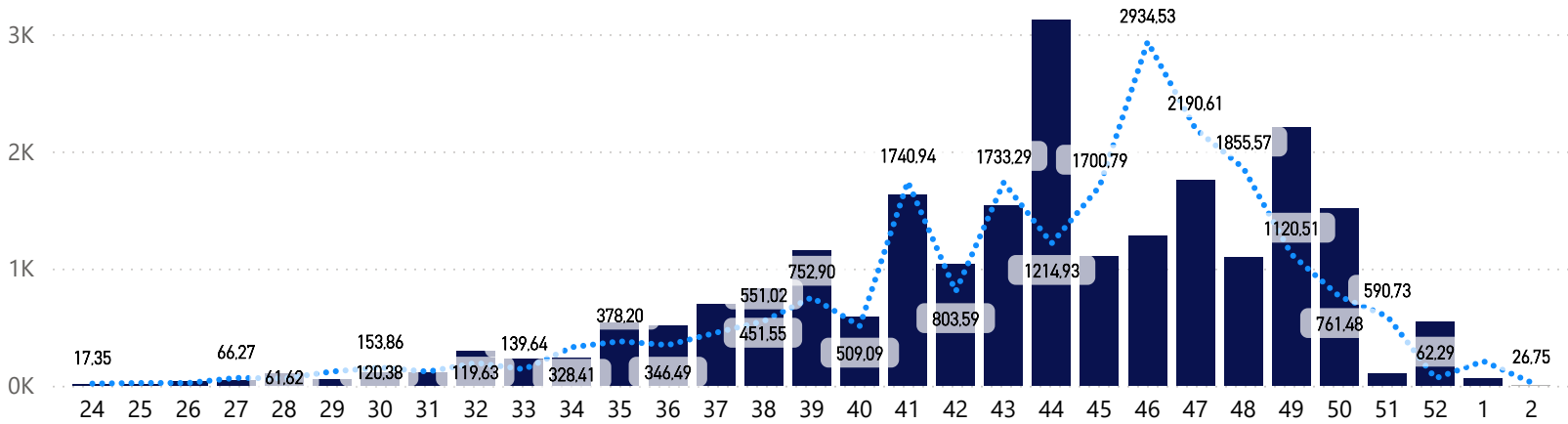
Season 2024/2025 - Week 1

(Report in Tonnage)



## 23/24 vs 24/25 per Week

● Confirmed ● Unconfirmed ● 23/24



## Comparison Report Week (23/24 vs 24/25)

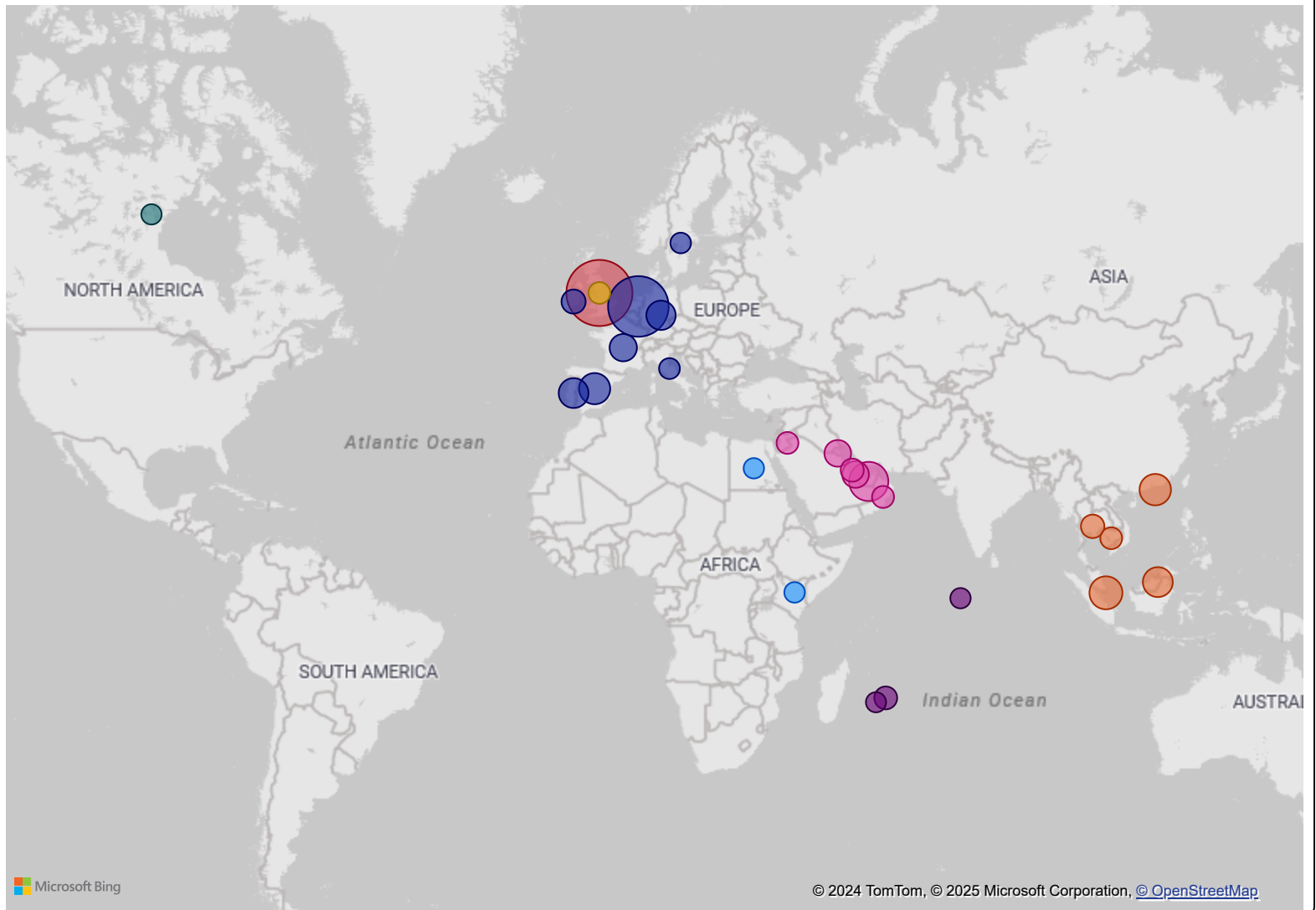
Region	24/25 Air	24/25 Sea	24/25 Total	23/24 Air	23/24 Sea	23/24 Total	Diff%
Europe	0,00	34,24	34,24	23,66	38,08	61,74	-44,5%
United Kingdom	0,00	14,40	14,40	31,60	94,08	125,68	-88,5%
Middle East	7,61	0,00	7,61	0,00	6,44	6,44	18,2%
Far East & Asia	5,76	0,00	5,76	7,20	7,65	14,85	-61,2%
Indian Ocean Islands	1,17	0,00	1,17	0,00	0,00	0,00	100,0%
Africa							
Other							
Russian Federation							
USA & Canada							
<b>Total</b>	<b>14,54</b>	<b>48,64</b>	<b>63,18</b>	<b>62,46</b>	<b>146,25</b>	<b>208,71</b>	<b>-69,7%</b>

## Comparison Year To Date (23/24 vs 24/25)

Region	24/25 Air	24/25 Sea	24/25 Total	23/24 Air	23/24 Sea	23/24 Total	Diff%
Africa	3,41	0,00	3,41	7,97	0,49	8,46	-59,7%
Europe	2 364,72	6 543,18	8 907,90	3 879,14	6 097,98	9 977,12	-10,7%
Far East & Asia	1 368,25	475,90	1 844,15	1 034,04	461,65	1 495,69	23,3%
Indian Ocean Islands	40,04	1,20	41,24	40,11	3,89	44,00	-6,3%
Middle East	1 514,89	956,01	2 470,90	1 090,81	1 043,27	2 134,08	15,8%
Other	5,14	0,00	5,14	0,00	0,00	0,00	100,0%
Russian Federation	15,94	0,00	15,94	12,39	0,00	12,39	28,7%
United Kingdom	3 366,96	5 927,25	9 294,21	3 257,15	4 225,59	7 482,74	24,2%
USA & Canada	0,89	0,00	0,89	0,00	0,00	0,00	100,0%
<b>Total</b>	<b>8 680,24</b>	<b>13 903,54</b>	<b>22 583,78</b>	<b>9 321,61</b>	<b>11 832,87</b>	<b>21 154,48</b>	<b>6,8%</b>

## Exports per Country

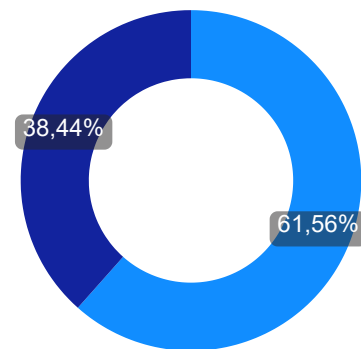
Region ● Africa ● Europe ● Far East & Asia ● Indian Ocea... ● Middle East ● Other ● Russian Fe... ● United Ki... ● USA & C...



### YTD Export Growth % (23/24 vs 24/25)

Region	24/25	23/24	Diff%
United Kingdom	9 294,21	7 482,74	24,2%
Europe	8 907,90	9 977,12	-10,7%
Middle East	2 470,90	2 134,08	15,8%
Far East & Asia	1 844,15	1 495,69	23,3%
Indian Ocean Islands	41,24	44,00	-6,3%
Russian Federation	15,94	12,39	28,7%
Other	5,14	0,00	100,0%
Africa	3,41	8,46	-59,7%
USA & Canada	0,89	0,00	100,0%
<b>Total</b>	<b>22 583,78</b>	<b>21 154,48</b>	<b>6,8%</b>

### Transport Type



Transport ● Sea ● Air

## Exports per Region and Country

Region	Country	24/25	23/24	Diff	Diff%
Africa	<b>Egypt</b>	1,36	7,97	-6,61	-82,9%
	<b>Ghana</b>	0,00	0,49	-0,49	-100,0%
	<b>Kenya</b>	2,05	0,00	2,05	100,0%
	<b>Total</b>	<b>3,41</b>	<b>8,46</b>	<b>-5,05</b>	<b>-59,7%</b>
Europe	<b>Belgium</b>	0,00	234,57	-234,57	-100,0%
	<b>France</b>	243,56	187,84	55,72	29,7%
	<b>Germany</b>	387,73	437,02	-49,29	-11,3%
	<b>Ireland</b>	80,01	176,00	-95,99	-54,5%
	<b>Italy</b>	4,23	27,23	-23,00	-84,5%
	<b>Netherlands</b>	7 201,69	7 732,09	-530,40	-6,9%
	<b>Portugal</b>	432,32	0,00	432,32	100,0%
	<b>Spain</b>	555,84	1 170,32	-614,48	-52,5%
	<b>Sweden</b>	2,52	12,05	-9,53	-79,1%
	<b>Total</b>	<b>8 907,90</b>	<b>9 977,12</b>	<b>-1 069,22</b>	<b>-10,7%</b>
Far East & Asia	<b>Cambodia</b>	17,00	14,32	2,68	18,7%
	<b>Hong Kong</b>	581,26	303,13	278,13	91,8%
	<b>Indonesia</b>	0,00	0,63	-0,63	-100,0%
	<b>Malaysia</b>	437,85	350,49	87,36	24,9%
	<b>Singapore</b>	751,39	801,47	-50,08	-6,2%
	<b>Thailand</b>	56,65	25,65	31,00	120,9%
	<b>Total</b>	<b>1 844,15</b>	<b>1 495,69</b>	<b>348,46</b>	<b>23,3%</b>
Indian Ocean Islands	<b>Maldives</b>	1,16	0,00	1,16	100,0%
	<b>Mauritius</b>	39,70	39,92	-0,22	-0,6%
	<b>Reunion</b>	0,38	3,53	-3,15	-89,2%
	<b>Seychelles</b>	0,00	0,55	-0,55	-100,0%
	<b>Total</b>	<b>41,24</b>	<b>44,00</b>	<b>-2,76</b>	<b>-6,3%</b>
Middle East	<b>Bahrain</b>	45,32	22,45	22,87	101,9%
	<b>Jordan</b>	17,82	13,59	4,23	31,1%
	<b>Kuwait</b>	201,59	166,62	34,97	21,0%
	<b>Oman</b>	20,49	28,00	-7,51	-26,8%
	<b>Qatar</b>	202,23	199,42	2,81	1,4%
	<b>Saudi Arabia</b>	356,58	394,57	-37,99	-9,6%
	<b>United Arab Emirates</b>	1 626,87	1 309,43	317,44	24,2%
	<b>Total</b>	<b>2 470,90</b>	<b>2 134,08</b>	<b>336,82</b>	<b>15,8%</b>
Other	<b>Unknown</b>	5,14	0,00	5,14	100,0%
	<b>Total</b>	<b>5,14</b>	<b>0,00</b>	<b>5,14</b>	<b>100,0%</b>
Russian Federation	<b>Russian Federation</b>	15,94	12,39	3,55	28,7%
	<b>Total</b>	<b>15,94</b>	<b>12,39</b>	<b>3,55</b>	<b>28,7%</b>

**Indemnity:** Agri-hub shall take all reasonable precautions to ensure that any information and data provided by Agri-hub from its information sources are correct. Neither Agri-hub nor any of its directors, employees or information sources take any responsibility for action or losses that might occur as a result of the usage of this information.